

Recombinant Human RAD51 (G151D) Mutation Protein

Cat. No. RAD1-02H **Lot. No.** (See product label)

SPECIFICATION

Product Overview	Recombinant Human RAD51 (G151D) Mutation Protein without tag was expressed in E. coli.
Species	Human
Source	E.coli
Description	<p>The protein encoded by this gene is a member of the RAD51 protein family. RAD51 family members are highly similar to bacterial RecA and <i>Saccharomyces cerevisiae</i> Rad51, and are known to be involved in the homologous recombination and repair of DNA. This protein can interact with the ssDNA-binding protein RPA and RAD52, and it is thought to play roles in homologous pairing and strand transfer of DNA. This protein is also found to interact with BRCA1 and BRCA2, which may be important for the cellular response to DNA damage. BRCA2 is shown to regulate both the intracellular localization and DNA-binding ability of this protein. Loss of these controls following BRCA2 inactivation may be a key event leading to genomic instability and tumorigenesis. Multiple transcript variants encoding different isoforms have been found for this gene.</p>
Purity	>90 % as determined by SDS-PAGE
Storage	<p>Short Term: Storage at +4 centigrade Long Term: Storage at -20 to -80 centigrade. Avoid freeze/thaw cycles.</p>
Concentration	0.2 mg/mL

 Tel: 1-631-559-9269 1-516-512-3133

 Email: info@creative-biomart.com  Fax: 1-631-938-8127

 45-1 Ramsey Road, Shirley, NY 11967, USA

Storage Buffer 20 mM Tris-HCl, 100 mM KCl, 1 mM DTT, 0.5 mM EDTA, 10% glycerol, pH 8.0

GENE INFORMATION

Gene Name RAD51 RAD51 recombinase [Homo sapiens (human)]

Official Symbol RAD51

Synonyms RAD51; RAD51 recombinase; RECA; BRCC5; FANCR; MRMV2; HRAD51; RAD51A; HsRad51; HsT16930; DNA repair protein RAD51 homolog 1; BRCA1/BRCA2-containing complex, subunit 5; RAD51 homolog A; RecA, E. coli, homolog of; RecA-like protein; recombination protein A

Gene ID 5888

mRNA Refseq NM_133487

Protein Refseq NP_597994

MIM 179617

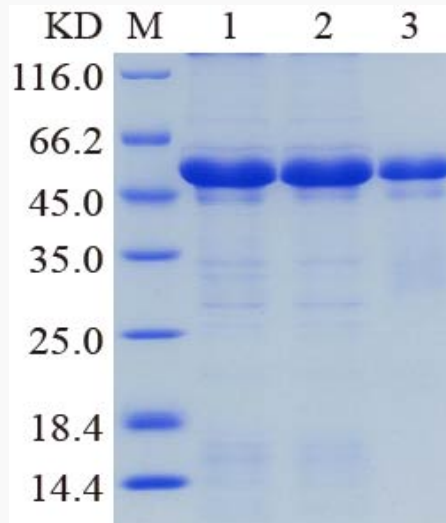
UniProt ID Q06609

 Tel: 1-631-559-9269 1-516-512-3133

 Email: info@creative-biomart.com  Fax: 1-631-938-8127

 45-1 Ramsey Road, Shirley, NY 11967, USA

SDS-PAGE



SDS-PAGE analysis of purified recombinant RAD51_G151D, His tag

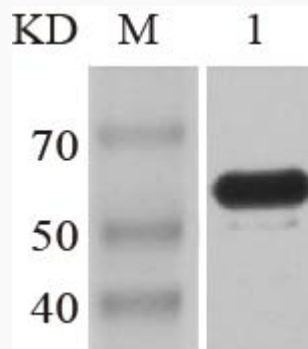
Lane M: Protein Marker

Lane 1: Un-purified

Lane 2: Flow through,

Lane 3: Elution

WB



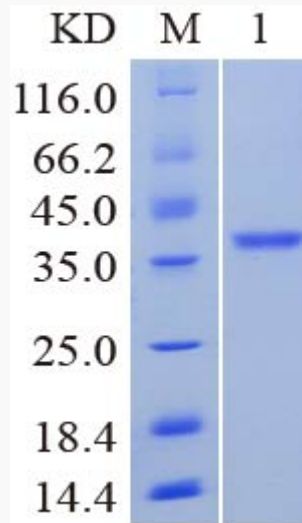
WB analysis of purified recombinant Human RAD51_G151D, His tag

Tel: 1-631-559-9269 1-516-512-3133

Email: info@creative-biomart.com Fax: 1-631-938-8127

45-1 Ramsey Road, Shirley, NY 11967, USA

Tag free
RAD51_G151D



 Tel: 1-631-559-9269 1-516-512-3133

 Email: info@creative-biomart.com  Fax: 1-631-938-8127

 45-1 Ramsey Road, Shirley, NY 11967, USA