

## Recombinant Human RAD50 protein, His-tagged

Cat. No. RAD50-1744H Lot. No. (See product label)

### SPECIFICATION

<b>Product Overview</b>	Recombinant Human RAD50 aa. (Val400~Ala595 (Accession # Q92878)) fused with N-terminal His tag was produced in E. coli cells.
<b>Species</b>	Human
<b>Source</b>	E.coli
<b>ProteinLength</b>	Val400~Ala595
<b>Description</b>	The protein encoded by this gene is highly similar to <i>Saccharomyces cerevisiae</i> Rad50, a protein involved in DNA double-strand break repair. This protein forms a complex with MRE11 and NBS1. The protein complex binds to DNA and displays numerous enzymatic activities that are required for nonhomologous joining of DNA ends. This protein, cooperating with its partners, is important for DNA double-strand break repair, cell cycle checkpoint activation, telomere maintenance, and meiotic recombination. Knockout studies of the mouse homolog suggest this gene is essential for cell growth and viability. Mutations in this gene are the cause of Nijmegen breakage syndrome-like disorder.
<b>Form</b>	Freeze-dried powder
<b>Molecular Mass</b>	27kDa as determined by SDS-PAGE reducing conditions.
<b>Endotoxin</b>	<1.0EU per 1ug (determined by the LAL method)

 Tel: 1-631-559-9269 1-516-512-3133

 Email: [info@creative-biomart.com](mailto:info@creative-biomart.com)  Fax: 1-631-938-8127

 45-1 Ramsey Road, Shirley, NY 11967, USA

<b>Purity</b>	>95%
<b>Applications</b>	SDS-PAGE; WB; ELISA; IP.
<b>Stability</b>	The thermal stability is described by the loss rate. The loss rate was determined by accelerated thermal degradation test, that is, incubate the protein at 37°C for 48h, and no obvious degradation and precipitation were observed. The loss rate is less than 5% within the expiration date under appropriate storage condition.
<b>Storage</b>	Avoid repeated freeze/thaw cycles. Store at 2-8°C for one month. Aliquot and store at -80°C for 12 months.
<b>Storage buffer</b>	Supplied as lyophilized form in PBS, pH 7.4, containing 5% sucrose, 0.01% sarcosyl.
<b>Reconstitution</b>	Reconstitute in sterile PBS, pH7.2-pH7.4.
<b>Isoelectric Point</b>	6.6

## GENE INFORMATION

<b>Gene Name</b>	<a href="#">RAD50</a> <a href="#">RAD50 double strand break repair protein [ Homo sapiens (human) ]</a>
<b>Official Symbol</b>	<a href="#">RAD50</a>
<b>Synonyms</b>	<a href="#">RAD50</a> ; <a href="#">RAD50 double strand break repair protein</a> ; <a href="#">NBSLD</a> ; <a href="#">RAD502</a> ; <a href="#">hRad50</a> ; <a href="#">DNA repair protein RAD50</a> ; <a href="#">RAD50 homolog, double strand break repair protein</a>
<b>Gene ID</b>	<a href="#">10111</a>
<b>mRNA Refseq</b>	<a href="#">NM_005732.3</a>

 Tel: 1-631-559-9269 1-516-512-3133

 Email: [info@creative-biomart.com](mailto:info@creative-biomart.com)  Fax: 1-631-938-8127

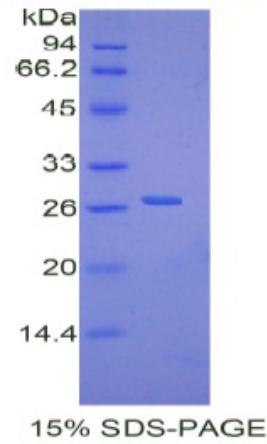
 45-1 Ramsey Road, Shirley, NY 11967, USA

Protein Refseq NP\_005723.2

UniProt ID Q92878

SDS-PAGE

**Human RAD50**



 Tel: 1-631-559-9269 1-516-512-3133

 Email: [info@creative-biomart.com](mailto:info@creative-biomart.com)  Fax: 1-631-938-8127

 45-1 Ramsey Road, Shirley, NY 11967, USA