

# Recombinant Full Length Human RAD51 Protein, C-Flag-tagged

**Cat. No.** RAD51-279HFL    **Lot. No.** (See product label)

## SPECIFICATION

<b>Product Overview</b>	Recombinant Full Length Human RAD51 Protein, fused to Flag-tag at C-terminus, was expressed in Mammalian cells.
<b>Species</b>	Human
<b>Source</b>	Mammalian Cells
<b>Description</b>	<p>The protein encoded by this gene is a member of the RAD51 protein family. RAD51 family members are highly similar to bacterial RecA and <i>Saccharomyces cerevisiae</i> Rad51, and are known to be involved in the homologous recombination and repair of DNA. This protein can interact with the ssDNA-binding protein RPA and RAD52, and it is thought to play roles in homologous pairing and strand transfer of DNA. This protein is also found to interact with BRCA1 and BRCA2, which may be important for the cellular response to DNA damage. BRCA2 is shown to regulate both the intracellular localization and DNA-binding ability of this protein. Loss of these controls following BRCA2 inactivation may be a key event leading to genomic instability and tumorigenesis. Multiple transcript variants encoding different isoforms have been found for this gene.</p>
<b>Form</b>	25 mM Tris HCl, pH 7.3, 100 mM glycine, 10% glycerol.
<b>Molecular Mass</b>	36.8 kDa
<b>AA Sequence</b>	MAMQMQLLEANADTSVEEESFGPQPISRLEQCGINANDVKKLEEAGFHTVEAVAYAP

 Tel: 1-631-559-9269    1-516-512-3133

 Email: [info@creative-biomart.com](mailto:info@creative-biomart.com)     Fax: 1-631-938-8127

 45-1 Ramsey Road, Shirley, NY 11967, USA

KKELINIKGISEAK ADKILAEAAKLVPMGFTTATEFHQRRSEIIQITTGSKELDKLLQGG  
 IETGSITEMFGEFRTGKTQICHTL AVTCQLPIDRGGGEGKAMYIDTEGTFRPERLLAV  
 AERYGLSGSDVLDNVAYARAFNTDHTQQLLYQASAM MVESRYALLIVDSATALYRT  
 DYSGRGELSARQMHLARFLRMLLRLADEFVAVVITNQVVAQVDGAAMFA  
 ADPKKPIGGNIIAHASTTRLYLRKGRGETRICKIYDSPCLPEAEAMFAINADGVGDAK  
 DTRTRPLEQKLISEEDLAANDILDYKDDDDKV

<b>Purity</b>	> 80% as determined by SDS-PAGE and Coomassie blue staining.
<b>Stability</b>	Stable for 12 months from the date of receipt of the product under proper storage and handling conditions. Avoid repeated freeze-thaw cycles.
<b>Storage</b>	Store at -80 centigrade.
<b>Concentration</b>	>50 ug/mL as determined by microplate BCA method.
<b>Preparation</b>	Recombinant protein was captured through anti-DDK affinity column followed by conventional chromatography steps.
<b>Protein Families</b>	Druggable Genome, Stem cell - Pluripotency, Transcription Factors
<b>Protein Pathways</b>	Homologous recombination, Pancreatic cancer, Pathways in cancer
<b>Full Length</b>	Full L.

## GENE INFORMATION

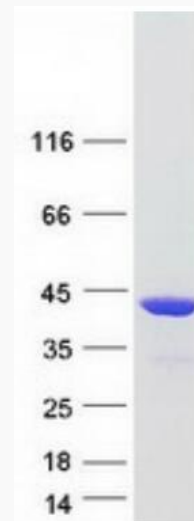
<b>Gene Name</b>	<a href="#">RAD51</a> <a href="#">RAD51 recombinase [ Homo sapiens (human) ]</a>
<b>Official Symbol</b>	<a href="#">RAD51</a>

 Tel: 1-631-559-9269 1-516-512-3133

 Email: [info@creative-biomart.com](mailto:info@creative-biomart.com)  Fax: 1-631-938-8127

 45-1 Ramsey Road, Shirley, NY 11967, USA

<b>Synonyms</b>	RECA; BRCC5; FANCR; MRMV2; HRAD51; RAD51A; HsRad51; HsT16930
<b>Gene ID</b>	5888
<b>mRNA Refseq</b>	NM_002875.5
<b>Protein Refseq</b>	NP_002866.2
<b>MIM</b>	179617
<b>UniProt ID</b>	Q06609



Coomassie blue staining of purified RAD51 protein.

 Tel: 1-631-559-9269 1-516-512-3133

 Email: [info@creative-biomart.com](mailto:info@creative-biomart.com)  Fax: 1-631-938-8127

 45-1 Ramsey Road, Shirley, NY 11967, USA