

# Recombinant Human RAD51 Protein (Val174-Asp339), N-His tagged

Cat. No. RAD51-6135H Lot. No. (See product label)

## SPECIFICATION

<b>Product Overview</b>	Recombinant human RAD51 (Val174-Asp339) fused with the N-His tag was expressed in E. coli.
<b>Species</b>	Human
<b>Source</b>	E.coli
<b>ProteinLength</b>	Val174-Asp339
<b>Form</b>	Lyophilized powder/frozen liquid
<b>Molecular Mass</b>	20.42 kDa
<b>Purity</b>	> 90 % as determined by SDS-PAGE
<b>Notes</b>	For research use only.
<b>Storage</b>	Use a manual defrost freezer and avoid repeated freeze thaw cycles. Store at 2 to 8 centigrade for one week. Store at -20 to -80 centigrade for twelve months from the date of receipt.
<b>Storage Buffer</b>	0.01M PBS, pH 7.4, 0.02 % NLS
<b>Reconstitution</b>	Reconstitute in sterile water for a stock solution.

 Tel: 1-631-559-9269 1-516-512-3133

 Email: [info@creative-biomart.com](mailto:info@creative-biomart.com)  Fax: 1-631-938-8127

 45-1 Ramsey Road, Shirley, NY 11967, USA

**Shipping** They are shipped out with dry ice/blue ice unless customers require otherwise.

## GENE INFORMATION

**Gene Name** RAD51 RAD51 homolog (*S. cerevisiae*) [ *Homo sapiens* (human) ]

**Official Symbol** RAD51

**Synonyms** RAD51; RAD51 homolog (*S. cerevisiae*); RAD51 (*S. cerevisiae*) homolog (E coli RecA homolog), RAD51 homolog (RecA homolog, *E. coli*) (*S. cerevisiae*), RAD51A, RECA; DNA repair protein RAD51 homolog 1; BRCA1/BRCA2 containing complex; subunit 5; BRCC5; HsRad51; HsT16930; RAD51 homolog A; RecA-like protein; recombination protein A; RecA, *E. coli*, homolog of; RAD51 homolog (RecA homolog, *E. coli*); BRCA1/BRCA2-containing complex, subunit 5; RECA; MRMV2; HRAD51; RAD51A;

**Gene ID** 5888

**mRNA Refseq** NM\_001164269

**Protein Refseq** NP\_001157741

**MIM** 179617

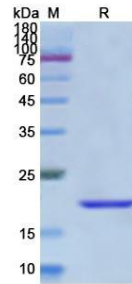
**UniProt ID** Q06609

 Tel: 1-631-559-9269 1-516-512-3133

 Email: [info@creative-biomart.com](mailto:info@creative-biomart.com)  Fax: 1-631-938-8127

 45-1 Ramsey Road, Shirley, NY 11967, USA

**SDS-PAGE**



 Tel: 1-631-559-9269 1-516-512-3133

 Email: [info@creative-biomart.com](mailto:info@creative-biomart.com)  Fax: 1-631-938-8127

 45-1 Ramsey Road, Shirley, NY 11967, USA