

# Recombinant Human RAE1 Protein, Myc/DDK-tagged, C13 and N15-labeled

**Cat. No.** RAE1-4037H    **Lot. No.** (See product label)

## SPECIFICATION

<b>Product Overview</b>	RAE1 MS Standard C13 and N15-labeled recombinant protein (NP_001015885) with a C-terminal MYC/DDK tag, was expressed in HEK293 cells.
<b>Species</b>	Human
<b>Source</b>	HEK293
<b>Description</b>	Mutations in the <i>Schizosaccharomyces pombe</i> Rae1 and <i>Saccharomyces cerevisiae</i> Gle2 genes have been shown to result in accumulation of poly(A)-containing mRNA in the nucleus, suggesting that the encoded proteins are involved in RNA export. The protein encoded by this gene is a homolog of yeast Rae1. It contains four WD40 motifs, and has been shown to localize to distinct foci in the nucleoplasm, to the nuclear rim, and to meshwork-like structures throughout the cytoplasm. This gene is thought to be involved in nucleocytoplasmic transport, and in directly or indirectly attaching cytoplasmic mRNPs to the cytoskeleton. Alternatively spliced transcript variants encoding the same protein have been found for this gene.
<b>Molecular Mass</b>	41 kDa
<b>AA Sequence</b>	MSLFGTTSFGFTSGTSMFGSATTDNHNPMKDIEVTSSPDDSIGCLSFSPPTLPGNFL IAGSWANDVRCWEVQDSGQTIPKAQQMHTGPVLDVCWSDDGSKVFTASCDKTAK MWDLSSNQAIQIAQHDAPVKTIHWIKAPNYSCVMTGSDKTLKFDTRSSNPMMVL QLPERCYCADVIYPMAVVATAERGLIVYQLENQPSEFRRIESPLKHQHRCVAIFKDK

 Tel: 1-631-559-9269    1-516-512-3133

 Email: [info@creative-biomart.com](mailto:info@creative-biomart.com)     Fax: 1-631-938-8127

 45-1 Ramsey Road, Shirley, NY 11967, USA

QNKPTGFALGSIEGRVAIHYNPPNPAKDNFTFKCHRSNGTNTSAPQDIYAVNGIAFH  
 PVHGTLATVGS DGRFSFWDKDARTKLKTSEQLDQPISACCFNHNGNIFAYASSYDW  
 SKGHEFYNPQKKNYIFLRNAAEELKPRNKKTRTRPLEQKLISEEDLAANDILDYKDDD  
 DKV

**Purity** > 80% as determined by SDS-PAGE and Coomassie blue staining

**Stability** Stable for 3 months from receipt of products under proper storage and handling conditions.

**Storage** Store at -80 centigrade. Avoid repeated freeze-thaw cycles.

**Concentration** 50 µg/mL as determined by BCA

**Storage Buffer** 100 mM glycine, 25 mM Tris-HCl, pH 7.3.

## GENE INFORMATION

**Gene Name** RAE1 ribonucleic acid export 1 [ Homo sapiens (human) ]

**Official Symbol** RAE1

**Synonyms** RAE1; RAE1 RNA export 1 homolog (S. pombe); RAE1 (RNA export 1, S.pombe) homolog; mRNA export factor; Mnrp41; mRNA export protein; rae1 protein homolog; migration-inducing gene 14; mRNA-binding protein, 41-kD; mRNA-associated protein MRNP 41; homolog of yeast Rae1 (Bharathi) mRNA-associated protein of 41 kDa (Kraemer); MIG14; MRNP41; dJ481F12.3; dJ800J21.1; FLJ30608; MGC117333; MGC126076; MGC126077;

**Gene ID** 8480

 Tel: 1-631-559-9269 1-516-512-3133

 Email: [info@creative-biomart.com](mailto:info@creative-biomart.com)  Fax: 1-631-938-8127

 45-1 Ramsey Road, Shirley, NY 11967, USA

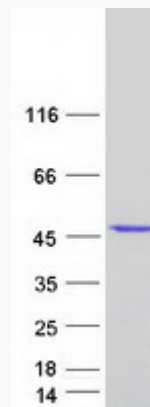
mRNA Refseq [NM\\_001015885](#)

Protein Refseq [NP\\_001015885](#)

MIM [603343](#)

UniProt ID [P78406](#)

SDS-PAGE



 Tel: 1-631-559-9269 1-516-512-3133

 Email: [info@creative-biomart.com](mailto:info@creative-biomart.com)  Fax: 1-631-938-8127

 45-1 Ramsey Road, Shirley, NY 11967, USA