

# Active Recombinant Human RAET1L Protein, His-tagged

Cat. No. RAET1L-02H Lot. No. (See product label)

## SPECIFICATION

|                         |  |
|-------------------------|--|
| <b>Product Overview</b> | Recombinant human RAET1L (26-218aa), fused to His-tag at C-terminus, was expressed in insect cell and purified by using conventional chromatography techniques.  |
| <b>Species</b>          | Human  |
| <b>Source</b>           | Insect Cells   |
| <b>ProteinLength</b>    | 26-218aa   |
| <b>Description</b>      | RAET1L belongs to the RAET1 family of major histocompatibility complex (MHC) class I-related genes, which are located within a 180-kb cluster on chromosome 6q24.2-q25.3. The REAT1 genes encode glycoproteins that contain extracellular alpha-1 and alpha-2 domains, but they lack the membrane proximal Ig-like alpha-3 domain. Most RAET1 glycoproteins are anchored to the membrane via glycosylphosphatidylinositol (GPI) linkage. |
| <b>Form</b>             | Liquid   |
| <b>Bio-activity</b>     | Measured by its binding ability in a functional ELISA with Human NKG2D.  |
| <b>Molecular Mass</b>   | 22.9kDa (202aa)  |
| <b>AA Sequence</b>      | RRDDPHSLCYDITVIPKFRPGPRWCAVQQQVDEKTFLLHYDCGNKTVTPVSPLGKKL<br>NVTMAWKAQNPVLREVVDILTEQLLDIQLENYTPKEPLTLQARMSCEQKAEGHSSG  |

 Tel: 1-631-559-9269 1-516-512-3133

 Email: [info@creative-biomart.com](mailto:info@creative-biomart.com)  Fax: 1-631-938-8127

 45-1 Ramsey Road, Shirley, NY 11967, USA

SWQFSIDGQTFLFLDSEKRMWTTVHPGARKMKEKWENDKDVAMSFHYISMGCIG  
WLEDFLMGMDSTLEPSAGAPLAMSSG

**Endotoxin** < 1 EU/μg of protein (determined by LAL method)

**Purity** > 95% by SDS-PAGE

**Applications** SDS-PAGE, Bioactivity

**Storage** Can be stored at +2 to +8 centigrade for 1 week. For long term storage, aliquot and store at -20 to -80 centigrade. Avoid repeated freezing and thawing cycles.

**Concentration** 1 mg/mL (determined by Absorbance at 280nm)

**Storage Buffer** Phosphate-Buffered Saline (pH 7.4) containing 10% glycerol

## GENE INFORMATION

**Gene Name** RAET1L retinoic acid early transcript 1L [ Homo sapiens (human) ]


**Official Symbol** RAET1L

**Synonyms** RAET1L; retinoic acid early transcript 1L; ULBP6; UL16-binding protein 6; UL16 binding protein 6; retinoic acid early transcript 1L protein

**Gene ID** 154064

**mRNA Refseq** NM\_130900

**Protein Refseq** NP\_570970

 Tel: 1-631-559-9269 1-516-512-3133

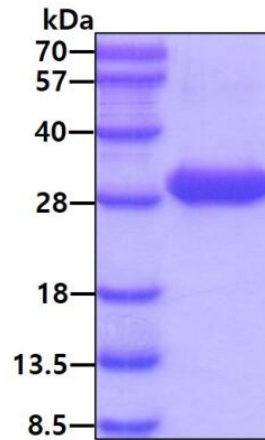
 Email: [info@creative-biomart.com](mailto:info@creative-biomart.com)  Fax: 1-631-938-8127

 45-1 Ramsey Road, Shirley, NY 11967, USA

**MIM** 611047

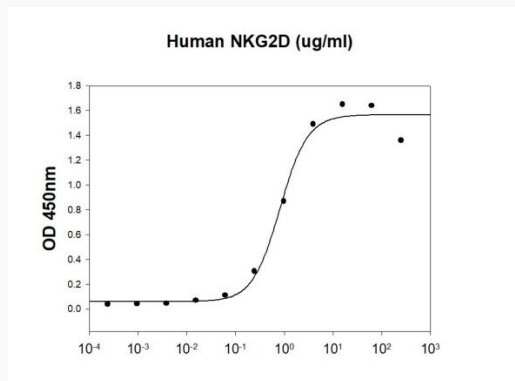
**UniProt ID** Q5VY80

**SDS-PAGE**



3µg by SDS-PAGE under reducing condition and visualized by coomassie blue stain

**Biological Activity**



Human RAET1L/ULBP6 is coated at 10 µg/mL (100 µL/well) can bind Human

Tel: 1-631-559-9269 1-516-512-3133

Email: [info@creative-biomart.com](mailto:info@creative-biomart.com) Fax: 1-631-938-8127

45-1 Ramsey Road, Shirley, NY 11967, USA



NKG2D in a Functional ELISA assay.

 Tel: 1-631-559-9269 1-516-512-3133

 Email: [info@creative-biomart.com](mailto:info@creative-biomart.com)  Fax: 1-631-938-8127

 45-1 Ramsey Road, Shirley, NY 11967, USA