

Recombinant Human RAF1 Protein (RBD, 50-140), N-6xHis and C-FLAG

Cat. No. RAF1-06H **Lot. No.** (See product label)

SPECIFICATION

Product Overview Human Ras Binding Domain (RBD) of Raf-1 Proto-Oncogene, Serine/Threonine Kinase (RAF1), (UniProt # P04049, amino acids 50-140), expressed with an N-terminal 6xHis and C-terminal FLAG in E. coli. Specifically binds to and precipitates Ras-GTP from cell lysate. Can be bound to glutathione coated plates prior to precipitating Ras-GTP.

Species Human

Source E.coli

ProteinLength 50-140

Description This gene is the cellular homolog of viral raf gene (v-raf). The encoded protein is a MAP kinase kinase kinase (MAP3K), which functions downstream of the Ras family of membrane associated GTPases to which it binds directly. Once activated, the cellular RAF1 protein can phosphorylate to activate the dual specificity protein kinases MEK1 and MEK2, which in turn phosphorylate to activate the serine/threonine specific protein kinases, ERK1 and ERK2. Activated ERKs are pleiotropic effectors of cell physiology and play an important role in the control of gene expression involved in the cell division cycle, apoptosis, cell differentiation and cell migration. Mutations in this gene are associated with Noonan syndrome 5 and LEOPARD syndrome 2.

Purity > 95% by SDS-PAGE

 Tel: 1-631-559-9269 1-516-512-3133

 Email: info@creative-biomart.com  Fax: 1-631-938-8127

 45-1 Ramsey Road, Shirley, NY 11967, USA

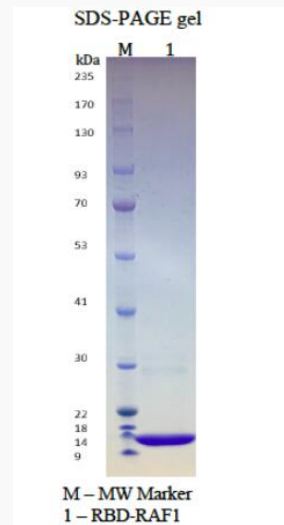
Usage	Inhibitor Screening, binding assays, enzyme kinetics, and selectivity profiling.
Storage	Stable for at least 12 months at -80 centigrade, Avoid freeze/thaw cycles
Storage Buffer	20 mM HEPES pH 7.3, 150 mM NaCl, 1mM TCEP, 10% glycerol
GENE INFORMATION	
Gene Name	RAF1 Raf-1 proto-oncogene, serine/threonine kinase [Homo sapiens (human)]
Official Symbol	RAF1
Synonyms	RAF1; Raf-1 proto-oncogene, serine/threonine kinase; NS5; CRAF; Raf-1; c-Raf; CMD1NN; RAF proto-oncogene serine/threonine-protein kinase; C-Raf proto-oncogene, serine/threonine kinase; Oncogene RAF1; proto-oncogene c-RAF; raf proto-oncogene serine/threonine protein kinase; v-raf-1 murine leukemia viral oncogene homolog 1; v-raf-1 murine leukemia viral oncogene-like protein 1; EC 2.7.11.1
Gene ID	5894
mRNA Refseq	NM_002880
Protein Refseq	NP_002871
MIM	164760
UniProt ID	P04049

 Tel: 1-631-559-9269 1-516-512-3133

 Email: info@creative-biomart.com  Fax: 1-631-938-8127

 45-1 Ramsey Road, Shirley, NY 11967, USA

SDS-PAGE



 Tel: 1-631-559-9269 1-516-512-3133

 Email: info@creative-biomart.com  Fax: 1-631-938-8127

 45-1 Ramsey Road, Shirley, NY 11967, USA