

Recombinant Human RAF1 Protein, Myc/DDK-tagged, C13 and N15-labeled

Cat. No. RAF1-4198H **Lot. No.** (See product label)

SPECIFICATION

Product Overview	RAF1 MS Standard C13 and N15-labeled recombinant protein (NP_002871) with a C-terminal MYC/DDK tag, was expressed in HEK293 cells.
Species	Human
Source	HEK293
Description	This gene is the cellular homolog of viral raf gene (v-raf). The encoded protein is a MAP kinase kinase kinase (MAP3K), which functions downstream of the Ras family of membrane associated GTPases to which it binds directly. Once activated, the cellular RAF1 protein can phosphorylate to activate the dual specificity protein kinases MEK1 and MEK2, which in turn phosphorylate to activate the serine/threonine specific protein kinases, ERK1 and ERK2. Activated ERKs are pleiotropic effectors of cell physiology and play an important role in the control of gene expression involved in the cell division cycle, apoptosis, cell differentiation and cell migration. Mutations in this gene are associated with Noonan syndrome 5 and LEOPARD syndrome 2.
Molecular Mass	73.1 kDa
AA Sequence	MEHIQGAWKTISNGFGFKDAVFDGSSCISPTIVQQFGYQRRASDDGKLTDPKTSNT IRVFLPNKQRTVVNVRNGMSLHDCLMKALKVRGLQPECCAVFRLLEHKGKKARLD WNTDAASLIGEELQVDFLDHVPLTTHNFARKTFLKLAFCDICQKFLNNGFRQCQCGY KFHEHCSTKVPTMCVDWSNIRQLLLFPNSTIGDSGVPALPSLTMRRMRESVSRMPV

 Tel: 1-631-559-9269 1-516-512-3133

 Email: info@creative-biomart.com  Fax: 1-631-938-8127

 45-1 Ramsey Road, Shirley, NY 11967, USA

SSQHRYSTPHAFTFNTSSPSSEGLSQRQRSTSTPNVHVMVSTTLPVDSRMIEDAIRS
 HSESASPSALSSSPNNLSPTGWSQPKTPVPAQRERAPVSGTQEKNKIRPRGQRDS
 SYYWEIEASEVMLSTRIGSGSFGTVYKKGKWHGDVAVKILKVVDPPTPEQFQAFRNEV
 AVLKRTRHVNILLFMGYMTKDNLAIVTQWCEGSSLYKHLHVQETKFQMFQLIDIARQ
 TAQGMDYLHAKNIIHRDMKSNNIFLHEGLTVKIGDFGLATVKSRWSGSQQVEQPTGS
 VLWMAPEVIRMQDNNPFSFQSDVYSYGIVLYELMTGELPYSHINNRDQIIFMVGGRY
 ASPDLSKLYKNCPKAMKRLVADCVKKVKEERPLFPQILSSIPELLQHSLPKINRSASEP
 SLHRAAHTEDINACTLTTSRPLPVFTRTRPLEQKLISEEDLAANDILDYKDDDDKV

Purity > 80% as determined by SDS-PAGE and Coomassie blue staining

Stability Stable for 3 months from receipt of products under proper storage and handling conditions.

Storage Store at -80 centigrade. Avoid repeated freeze-thaw cycles.

Concentration 50 µg/mL as determined by BCA

Storage Buffer 100 mM glycine, 25 mM Tris-HCl, pH 7.3.

GENE INFORMATION

Gene Name [RAF1 v-raf-1 murine leukemia viral oncogene homolog 1 \[Homo sapiens \(human\) \]](#)

Official Symbol [RAF1](#)

Synonyms RAF1; v-raf-1 murine leukemia viral oncogene homolog 1; RAF proto-oncogene serine/threonine-protein kinase; c Raf; CRAF; Raf 1; Oncogene RAF1; proto-oncogene c-RAF; raf proto-oncogene serine/threonine protein kinase; NS5; Raf-1; c-Raf;

 Tel: 1-631-559-9269 1-516-512-3133

 Email: info@creative-biomart.com  Fax: 1-631-938-8127

 45-1 Ramsey Road, Shirley, NY 11967, USA

Gene ID 5894

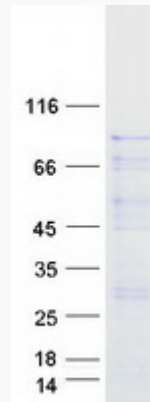
mRNA Refseq NM_002880

Protein Refseq NP_002871

MIM 164760

UniProt ID P04049

SDS-PAGE



 Tel: 1-631-559-9269 1-516-512-3133

 Email: info@creative-biomart.com  Fax: 1-631-938-8127

 45-1 Ramsey Road, Shirley, NY 11967, USA