

Recombinant Full Length Human RALBP1 Protein, C-Flag-tagged

Cat. No. RALBP1-340HFL **Lot. No.** (See product label)

SPECIFICATION

Product Overview	Recombinant Full Length Human RALBP1 Protein, fused to Flag-tag at C-terminus, was expressed in Mammalian cells.
Species	Human
Source	Mammalian Cells
Description	RALBP1 plays a role in receptor-mediated endocytosis and is a downstream effector of the small GTP-binding protein RAL. Small G proteins, such as RAL, have GDP-bound inactive and GTP-bound active forms, which shift from the inactive to the active state through the action of RALGDS, which in turn is activated by RAS.
Form	25 mM Tris HCl, pH 7.3, 100 mM glycine, 10% glycerol.
Molecular Mass	75.9 kDa
AA Sequence	MTECFLPPTSSPSEHRRVEHGSLTRTPSSEEISPTKFPGLYRTGEPSPPHDILHEP PDVVSDDKDHGK KKGKFKKKEKRTEGYAAFQEDSSGDEAESPSKMKRSKGIHVF KKPSFSKKKEKDFKIKEKPKKEEKHKEEK HKEEKHKEKSKDLTAADVVKQWKEKKK KKKPIQEPEVPQIDVPNLKPIFGIPLADAVERTMMYDGIRLP AVFRECIDYVEKYGMK CEGIYRVSGIKSKVDELKAAVDREESTNLEDYEPNTVASLLKQYLRLDPENLLT KEL MPRFEEACGRTTETEKVQEFQRLLKELPECNYLLISWLIVHMDHVIAKELETKMNIQN ISIVLSPTV QISNRVLYVFFTHVQELFGNVVLKQVMKPLRWSNMATMPTLPETQAGI KEEIRRQEFLLNCLHRDLQGGI KDLSKEERLWEVQRILTALKRKLREAKRQECETKIA

 Tel: 1-631-559-9269 1-516-512-3133

 Email: info@creative-biomart.com  Fax: 1-631-938-8127

 45-1 Ramsey Road, Shirley, NY 11967, USA

QEIASLSKEDVSKEEMNENEEVINILLAQENEIL TEQEELLAMEQFLRRQIASEKEEIE
 RLRAEIAEIQSRQQHGRSETEEYSSSESESESEDEEELQIILEDLQ RQNEELEIKNNHL
 NQAIHEEREAIHELRLVQLRLLQMQRAKAEQQAQEDEEPEWRGGAVQPPRDGVLEPK
 A
 AKEQPKAGKEPAKPSRDRKETSITRTRPLEQKLISEEDLAANDILDYKDDDDKV

Purity > 80% as determined by SDS-PAGE and Coomassie blue staining.

Stability Stable for 12 months from the date of receipt of the product under proper storage and handling conditions. Avoid repeated freeze-thaw cycles.

Storage Store at -80 centigrade.

Concentration >50 ug/mL as determined by microplate BCA method.

Preparation Recombinant protein was captured through anti-DDK affinity column followed by conventional chromatography steps.

Protein Pathways Pancreatic cancer, Pathways in cancer

Full Length Full L.

GENE INFORMATION

Gene Name RALBP1 ralA binding protein 1 [Homo sapiens (human)]

Official Symbol RALBP1

Synonyms RIP1; RLIP1; RLIP76

Gene ID 10928

 Tel: 1-631-559-9269 1-516-512-3133

 Email: info@creative-biomart.com  Fax: 1-631-938-8127

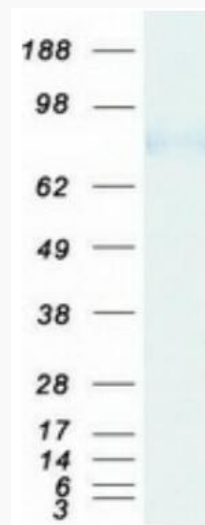
 45-1 Ramsey Road, Shirley, NY 11967, USA

mRNA Refseq [NM_006788.4](#)


Protein Refseq [NP_006779.1](#)

MIM [605801](#)


UniProt ID [Q15311](#)



Coomassie blue staining of purified RALBP1 protein.

 Tel: 1-631-559-9269 1-516-512-3133

 Email: info@creative-biomart.com  Fax: 1-631-938-8127

 45-1 Ramsey Road, Shirley, NY 11967, USA