

# Recombinant Human RAN Protein, MYC/DDK-tagged, C13 and N15-labeled

**Cat. No.** RAN-065H    **Lot. No.** (See product label)

## SPECIFICATION

### Product Overview

RAN MS Standard C13 and N15-labeled recombinant protein (NP\_006316) with a C-terminal MYC/DDK tag, was expressed in HEK293 cells.

### Species

Human

### Source

HEK293

### Description

RAN (ras-related nuclear protein) is a small GTP binding protein belonging to the RAS superfamily that is essential for the translocation of RNA and proteins through the nuclear pore complex. The RAN protein is also involved in control of DNA synthesis and cell cycle progression. Nuclear localization of RAN requires the presence of regulator of chromosome condensation 1 (RCC1). Mutations in RAN disrupt DNA synthesis. Because of its many functions, it is likely that RAN interacts with several other proteins. RAN regulates formation and organization of the microtubule network independently of its role in the nucleus-cytosol exchange of macromolecules. RAN could be a key signaling molecule regulating microtubule polymerization during mitosis. RCC1 generates a high local concentration of RAN-GTP around chromatin which, in turn, induces the local nucleation of microtubules. RAN is an androgen receptor (AR) coactivator that binds differentially with different lengths of polyglutamine within the androgen receptor. Polyglutamine repeat expansion in the AR is linked to Kennedy's disease (X-linked spinal and bulbar muscular atrophy). RAN coactivation of the AR diminishes with polyglutamine expansion within the AR, and this weak coactivation may lead to partial androgen

 Tel: 1-631-559-9269    1-516-512-3133

 Email: [info@creative-biomart.com](mailto:info@creative-biomart.com)     Fax: 1-631-938-8127

 45-1 Ramsey Road, Shirley, NY 11967, USA

insensitivity during the development of Kennedy's disease.

**Molecular Mass**

24.4 kDa

**AA Sequence**

MAAQGEPQVQFKLVLVGDGGTGKTTFVKRHLTGEFEKKYVATLGVEVHPLVFHTNR  
 GPIKFNVWDTAGQEKFGLRDGYYIQAQCAIMFDVTSRVTYKNVFNWHRDLVRVC  
 ENIPIVLCGNKVDIKDRKVKAKSIVFHRKKNLQYYDISAKSNYNFEKPFLLWARKLIGD  
 PNLEFVAMPALAPPEVVM DPALAAQYEHDLVAQTALPDEDDDLTRTRPLEQKLIS  
 EEDLAANDILDYKDDDDKV

**Purity**

> 80% as determined by SDS-PAGE and Coomassie blue staining

**Stability**

Stable for 3 months from receipt of products under proper storage and handling conditions.

**Storage**

Store at -80 centigrade. Avoid repeated freeze-thaw cycles.

**Concentration**

50 µg/mL as determined by BCA

**Storage Buffer**

100 mM glycine, 25 mM Tris-HCl, pH 7.3.

## GENE INFORMATION

**Gene Name**

RAN RAN, member RAS oncogene family [ Homo sapiens (human) ]

**Official Symbol**

RAN

**Synonyms**

RAN; RAN, member RAS oncogene family; ARA24; Gsp1; TC4; GTP-binding nuclear protein Ran; GTPase Ran; RanGTPase; androgen receptor-associated protein 24; guanosine triphosphatase Ran; member RAS oncogene family; ras-like protein TC4; ras-related nuclear protein; EC 3.6.5.1; EC 3.6.5.2; EC 3.6.5.3; EC 3.6.5.4

 Tel: 1-631-559-9269 1-516-512-3133

 Email: [info@creative-biomart.com](mailto:info@creative-biomart.com)  Fax: 1-631-938-8127

 45-1 Ramsey Road, Shirley, NY 11967, USA

**Gene ID** 5901

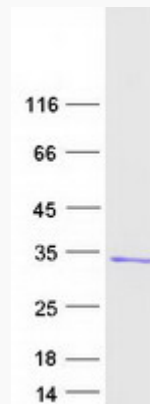
**mRNA Refseq** [NM\\_006325](#)

**Protein Refseq** [NP\\_006316](#)

**MIM** 601179

**UniProt ID** [P62826](#)

**SDS-PAGE**



 Tel: 1-631-559-9269 1-516-512-3133

 Email: [info@creative-biomart.com](mailto:info@creative-biomart.com)  Fax: 1-631-938-8127

 45-1 Ramsey Road, Shirley, NY 11967, USA