

# Recombinant Full Length Human RAN, Member RAS Oncogene Family

Cat. No. RAN-1125H Lot. No. (See product label)

## SPECIFICATION

<b>Species</b>	Human
<b>Source</b>	E.coli
<b>ProteinLength</b>	1-216 a.a.
<b>Description</b>	Ran (Ras-related nuclear protein, TC4) belongs to the superfamily of GTP binding proteins. It acts in diverse cellular processes such as nuclear transport, mitotic spindle assembly, and post-mitotic nuclear assembly. Protein preparation is 90% GDP-loaded, measured by HPLC.
<b>Molecular Weight</b>	24.0 kDa (216 amino acids).
<b>Form</b>	Liquid. Supplied in 20 mM KH <sub>2</sub> PO <sub>4</sub> /K <sub>2</sub> HPO <sub>4</sub> pH 7.0, 6.5 mM DTE, 150 mM KCl, 5 mM MgCl <sub>2</sub> and 5% glycerol.
<b>Purity</b>	≥95% by SDS-PAGE.
<b>Usage</b>	For in vitro use only.
<b>Storage</b>	Quality guaranteed for 12 months store at -80°C. Avoid freeze / thaw cycles.

## GENE INFORMATION

 Tel: 1-631-559-9269 1-516-512-3133

 Email: [info@creative-biomart.com](mailto:info@creative-biomart.com)  Fax: 1-631-938-8127

 45-1 Ramsey Road, Shirley, NY 11967, USA

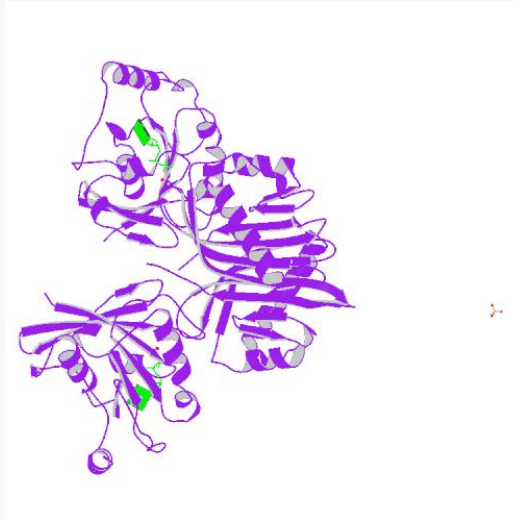
<b>Gene Name</b>	RAN RAN, member RAS oncogene family [ Homo sapiens ]
<b>Synonyms</b>	RAN, member RAS oncogene family; RAN; TC4; Gsp1; ARA24; ras-related nuclear protein; RanGTPase; OK/SW-cl.81; member RAS oncogene family; guanosine triphosphatase Ran; RanGTPase; RANBP3; Androgen receptor-associated protein 24; GTPase Ran; Ras-like protein TC4
<b>Gene ID</b>	5901
<b>mRNA Refseq</b>	NM_006325
<b>Protein Refseq</b>	NP_006316
<b>MIM</b>	601179
<b>UniProt ID</b>	P62826
<b>Chromosome Location</b>	12
<b>Function</b>	GTP binding; GTPase activity; androgen receptor binding; chromatin binding; nucleotide binding; protein binding; transcription coactivator activity

 Tel: 1-631-559-9269 1-516-512-3133

 Email: [info@creative-biomart.com](mailto:info@creative-biomart.com)  Fax: 1-631-938-8127

 45-1 Ramsey Road, Shirley, NY 11967, USA

PDB rendering based  
on 1a2k.



 Tel: 1-631-559-9269 1-516-512-3133

 Email: [info@creative-biomart.com](mailto:info@creative-biomart.com)  Fax: 1-631-938-8127

 45-1 Ramsey Road, Shirley, NY 11967, USA