

Recombinant Full Length Human RAN Protein, C-Flag-tagged

Cat. No. RAN-791HFL Lot. No. (See product label)

SPECIFICATION

Product Overview Recombinant Full Length Human RAN Protein, fused to Flag-tag at C-terminus, was expressed in Mammalian cells.

Species Human

Source Mammalian Cells

Description

RAN (ras-related nuclear protein) is a small GTP binding protein belonging to the RAS superfamily that is essential for the translocation of RNA and proteins through the nuclear pore complex. The RAN protein is also involved in control of DNA synthesis and cell cycle progression. Nuclear localization of RAN requires the presence of regulator of chromosome condensation 1 (RCC1). Mutations in RAN disrupt DNA synthesis. Because of its many functions, it is likely that RAN interacts with several other proteins. RAN regulates formation and organization of the microtubule network independently of its role in the nucleus-cytosol exchange of macromolecules. RAN could be a key signaling molecule regulating microtubule polymerization during mitosis. RCC1 generates a high local concentration of RAN-GTP around chromatin which, in turn, induces the local nucleation of microtubules. RAN is an androgen receptor (AR) coactivator that binds differentially with different lengths of polyglutamine within the androgen receptor. Polyglutamine repeat expansion in the AR is linked to Kennedy's disease (X-linked spinal and bulbar muscular atrophy). RAN coactivation of the AR diminishes with polyglutamine expansion within the AR, and this weak coactivation may lead to partial androgen insensitivity during the development of Kennedy's disease.

 Tel: 1-631-559-9269 1-516-512-3133

 Email: info@creative-biomart.com  Fax: 1-631-938-8127

 45-1 Ramsey Road, Shirley, NY 11967, USA



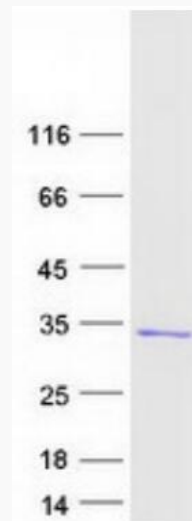
Form	25 mM Tris HCl, pH 7.3, 100 mM glycine, 10% glycerol.
Molecular Mass	24.2 kDa
AA Sequence	MAAQGEPQVQFKLVLVGDGGTGKTTFVKRHLTGEFEKKYVATLGVEVHPLVFHTNR GPIKFNVWDTAGQE KFGGLRDGYIIQAQCAIIMFDVTSRVTYKNVNPWHRDLVRVC ENIPIVLCGNKVDIKDRKVKAKSIVFHR KKNLQYYDISAKSNYNFEKPFLWLARKLIGD PNLEFVAMPALAPPEVVM DPALAAQYEHDLVAQTALP DEDDLTRTRPLEQKLISEEDLAANDILDYKDDDDKV
Purity	> 80% as determined by SDS-PAGE and Coomassie blue staining.
Stability	Stable for 12 months from the date of receipt of the product under proper storage and handling conditions. Avoid repeated freeze-thaw cycles.
Storage	Store at -80 centigrade.
Concentration	>50 ug/mL as determined by microplate BCA method.
Preparation	Recombinant protein was captured through anti-DDK affinity column followed by conventional chromatography steps.
Protein Families	Druggable Genome, Transcription Factors
Full Length	Full L.
GENE INFORMATION	
Gene Name	RAN RAN, member RAS oncogene family [Homo sapiens (human)]
Official Symbol	RAN

Tel: 1-631-559-9269 1-516-512-3133

Email: info@creative-biomart.com Fax: 1-631-938-8127

45-1 Ramsey Road, Shirley, NY 11967, USA

Synonyms	TC4; Gsp1; ARA24
Gene ID	5901
mRNA Refseq	NM_006325.5
Protein Refseq	NP_006316.1
MIM	601179
UniProt ID	P62826



Coomassie blue staining of purified RAN protein.

 Tel: 1-631-559-9269 1-516-512-3133

 Email: info@creative-biomart.com  Fax: 1-631-938-8127

 45-1 Ramsey Road, Shirley, NY 11967, USA