

# Recombinant Human RANBP2 Protein (2601-2802 aa), His-tagged

**Cat. No.** RANBP2-2250H    **Lot. No.** (See product label)

## SPECIFICATION

<b>Product Overview</b>	Recombinant Human RANBP2 Protein (2601-2802 aa) is produced by Yeast expression system. This protein is fused with a 6xHis tag at the N-terminal. Protein Description: Partial.
<b>Species</b>	Human
<b>Source</b>	Yeast
<b>ProteinLength</b>	2601-2802 aa
<b>Description</b>	E3 SUMO-protein ligase which facilitates SUMO1 and SUMO2 conjugation by UBE2I. Involved in transport factor (Ran-GTP, karyopherin)-mediated protein import via the F-G repeat-containing domain which acts as a docking site for substrates. Binds single-stranded RNA (in vitro). May bind DNA. Component of the nuclear export pathway. Specific docking site for the nuclear export factor exportin-1. Sumoylates PML at 'Lys-490' which is essential for the proper assembly of PML-NB. Recruits BICD2 to the nuclear envelope and cytoplasmic stacks of nuclear pore complex known as annulate lamellae during G2 phase of cell cycle.
<b>Form</b>	Tris-based buffer,50% glycerol
<b>Molecular Mass</b>	24.8 kDa
<b>AA Sequence</b>	PTEESSINYTFKTPEKAKEKPKPEDSPSDDDLIVYELTPTAEQKALATKCLKLPPTFFC

 Tel: 1-631-559-9269    1-516-512-3133

 Email: [info@creative-biomart.com](mailto:info@creative-biomart.com)     Fax: 1-631-938-8127

 45-1 Ramsey Road, Shirley, NY 11967, USA

YKNRPDYVSEEEEDDED FETAVKKLNGKLYLDGSEKCRPLEENTADNEKECIIVWEK  
 KPTVEEKAKADTLKLPPTFFCGVCSDTDEDNGNGEDFQSELQKVQEAQKSQTTEEIT  
 STTDSVYTGGEVMVPSFCKSEEPDSITKS

**Purity** > 90% as determined by SDS-PAGE.

**Notes** Repeated freezing and thawing is not recommended. Store working aliquots at 4 centigrade for up to one week.

**Storage** The shelf life is related to many factors, storage state, buffer ingredients, storage temperature and the stability of the protein itself. Generally, the shelf life of liquid form is 6 months at -20 centigrade/-80 centigrade. The shelf life of lyophilized form is 12 months at -20 centigrade/-80 centigrade.

**Concentration** A hardcopy of COA will be sent along with the products. Please refer to it for detailed information.

## GENE INFORMATION

**Gene Name** [RANBP2 RAN binding protein 2 \[ Homo sapiens \]](#)

**Official Symbol** [RANBP2](#)

**Synonyms** RANBP2; NUP358; P270; nucleoporin 358; nucleoporin Nup358; 358 kDa nucleoporin; ANE1; TRP1; TRP2; IIAE3;

**Gene ID** [5903](#)

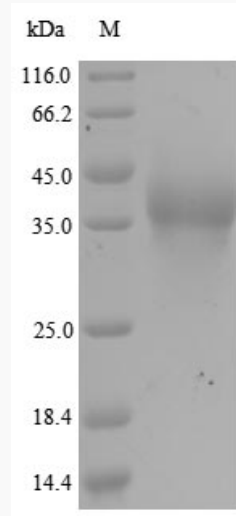
**mRNA Refseq** [NM\\_006267](#)

**Protein Refseq** [NP\\_006258](#)

 Tel: 1-631-559-9269 1-516-512-3133

 Email: [info@creative-biomart.com](mailto:info@creative-biomart.com)  Fax: 1-631-938-8127

 45-1 Ramsey Road, Shirley, NY 11967, USA

**MIM** 601181**UniProt ID** P49792

(Tris-Glycine gel) Discontinuous SDS-PAGE (reduced) with 5% enrichment gel and 15% separation gel.

 Tel: 1-631-559-9269 1-516-512-3133 Email: [info@creative-biomart.com](mailto:info@creative-biomart.com)  Fax: 1-631-938-8127 45-1 Ramsey Road, Shirley, NY 11967, USA