

Recombinant Human RAP1A Protein, Myc/DDK-tagged, C13 and N15-labeled

Cat. No. RAP1A-6523H **Lot. No.** (See product label)

SPECIFICATION

Product Overview

RAP1A MS Standard C13 and N15-labeled recombinant protein (NP_002875) with a C-terminal MYC/DDK tag, was expressed in HEK293 cells.

Species

Human

Source

HEK293

Description

This gene encodes a member of the Ras family of small GTPases. The encoded protein undergoes a change in conformational state and activity, depending on whether it is bound to GTP or GDP. This protein is activated by several types of guanine nucleotide exchange factors (GEFs), and inactivated by two groups of GTPase-activating proteins (GAPs). The activation status of the encoded protein is therefore affected by the balance of intracellular levels of GEFs and GAPs. The encoded protein regulates signaling pathways that affect cell proliferation and adhesion, and may play a role in tumor malignancy. Pseudogenes of this gene have been defined on chromosomes 14 and 17. Alternative splicing results in multiple transcript variants.

Molecular Mass

20.8 kDa

AA Sequence

MREYKLVVLGSGGVGKSALTVQFVQGIFVEKYDPTIEDSYRKQVEVDCQQCMLEILD
TAGTEQFTAMRDLYMKNQGQGFALVYSITAQSTFNDLQDLREQILRVKDTEDVPMILV
GNKCDLEDERVVGKEQGQNLARQWCNCAFLESSAKSKINVNEIFYDLVRQINRKT

 Tel: 1-631-559-9269 1-516-512-3133

 Email: info@creative-biomart.com  Fax: 1-631-938-8127

 45-1 Ramsey Road, Shirley, NY 11967, USA

VEKKKPKKKSCLLLTRTRPLEQKLISEEDLAANDILDYKDDDDKV

Purity > 80% as determined by SDS-PAGE and Coomassie blue staining

Stability Stable for 3 months from receipt of products under proper storage and handling conditions.

Storage Store at -80 centigrade. Avoid repeated freeze-thaw cycles.

Concentration 50 µg/mL as determined by BCA

Storage Buffer 100 mM glycine, 25 mM Tris-HCl, pH 7.3.

GENE INFORMATION

Gene Name [RAP1A](#) [RAP1A, member of RAS oncogene family \[Homo sapiens \(human\) \]](#)

Official Symbol [RAP1A](#)

Synonyms [RAP1A](#); [RAP1A, member of RAS oncogene family](#); [ras-related protein Rap-1A](#); [KREV 1](#); [SMGP21](#); [C21KG](#); [G-22K](#); [RAS-related protein RAP1A](#); [Ras-related protein Krev-1](#); [GTP-binding protein smg p21A](#); [RAP1](#); [KREV1](#); [KREV-1](#);

Gene ID [5906](#)

mRNA Refseq [NM_002884](#)

Protein Refseq [NP_002875](#)

MIM [179520](#)

 Tel: 1-631-559-9269 1-516-512-3133

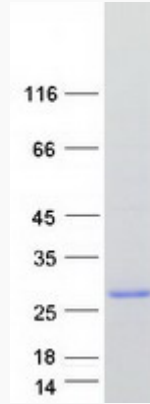
 Email: info@creative-biomart.com  Fax: 1-631-938-8127

 45-1 Ramsey Road, Shirley, NY 11967, USA

UniProt ID

P62834

SDS-PAGE



 Tel: 1-631-559-9269 1-516-512-3133

 Email: info@creative-biomart.com  Fax: 1-631-938-8127

 45-1 Ramsey Road, Shirley, NY 11967, USA