

Recombinant Human RAP1B, His-tagged

Cat. No. RAP1B-3469H Lot. No. (See product label)

SPECIFICATION

Product Overview	Recombinant human RAP1B protein, fused to His-tag at N-terminus, was expressed in E.coli and purified by using conventional chromatography techniques.
Species	Human
Source	E.coli
Description	RAP1B belongs to a superfamily of RAS-like small GTP-binding proteins involved in cell signaling. It possesses intrinsic GTPase activity and is ubiquitously expressed in mammalian tissues. The putative effector domain of Ras proteins, whose integrity is required for cell transformation as well as interaction with the putative effector protein GAP, is conserved in both Rap 1 proteins.
Form	Liquid. In 20 mM Tris-HCl buffer (pH8.0) containing 0.2M NaCl, 5mM DTT, 20% glycerol
Molecular Weight	22.6 kDa (201aa), confirmed by MALDI-TOF
Purity	> 90% by SDS - PAGE
Concentration	0.25 mg/ml (determined by Bradford assay)
Sequences of amino acids	MGSSHHHHHH SSGLVPRGSH MREYKLVVLG SGGVGKSALT VQFVQGIFVE KYDPTIEDSY RKQVEVDAQQ CMLEILD TAG TEQFTAMRDL YMKNGQGFAL VYSITAQSTF NDLQDLREQI LRVKDTDDVP MILVGNKCDL EDERVVGKEQ

 Tel: 1-631-559-9269 1-516-512-3133

 Email: info@creative-biomart.com  Fax: 1-631-938-8127

 45-1 Ramsey Road, Shirley, NY 11967, USA

GQNLARQWNN CAFLESSAKS KINVNEIFYD LVRQINRKTP VPGKARKKSS C

Storage

Can be stored at +4°C short term (1-2 weeks). For long term storage, aliquot and store at -20°C or -70°C. Avoid repeated freezing and thawing cycles.

GENE INFORMATION

Gene Name

RAP1B RAP1B, member of RAS oncogene family [Homo sapiens]

Synonyms

RAP1B, member of RAS oncogene family; K-REV; RAL1B; DKFZp586H0723; RAP1B; ras-related protein Rap-1b; OTTHUMP00000165028; RAS-related protein RAP1B; small GTP binding protein; GTP-binding protein smg p21B; Ras family small GTP binding protein RAP1B; OK/SW-cl.11

Gene ID

5908

mRNA Refseq

NM_001010942

Protein Refseq

NP_001010942

MIM

179530

UniProt ID

P61224

**Chromosome
Location**

12q14

Pathway

Renal cell carcinoma; Pancreatic secretion; Neurotrophin signaling pathway; Long-term potentiation; Leukocyte transendothelial migration; Focal adhesion; Chemokine signaling pathway; MAPK signaling pathway; Hemostasis; Diabetes pathways; Integration of energy metabolism; Signaling in Immune system; ntegrin cell surface

 Tel: 1-631-559-9269 1-516-512-3133

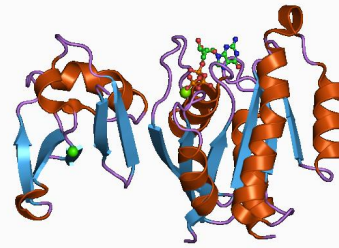
 Email: info@creative-biomart.com  Fax: 1-631-938-8127

 45-1 Ramsey Road, Shirley, NY 11967, USA

interactions

Function

GDP binding; GTP binding; GTPase activity; nucleotide binding; protein binding

PDBrendering based
on 1c1y. Tel: 1-631-559-9269 1-516-512-3133 Email: info@creative-biomart.com  Fax: 1-631-938-8127 45-1 Ramsey Road, Shirley, NY 11967, USA