

Recombinant Human RAP1B Protein, Myc/DDK-tagged, C13 and N15-labeled

Cat. No. RAP1B-3979H **Lot. No.** (See product label)

SPECIFICATION

Product Overview

RAP1B MS Standard C13 and N15-labeled recombinant protein (NP_001010942) with a C-terminal MYC/DDK tag, was expressed in HEK293 cells.

Species

Human

Source

HEK293

Description

This gene encodes a member of the RAS-like small GTP-binding protein superfamily. Members of this family regulate multiple cellular processes including cell adhesion and growth and differentiation. This protein localizes to cellular membranes and has been shown to regulate integrin-mediated cell signaling. This protein also plays a role in regulating outside-in signaling in platelets. Alternate splicing results in multiple transcript variants. Pseudogenes of this gene are found on chromosomes 3, 5, 6 and 9.

Molecular Mass

20.6 kDa

AA Sequence

MREYKLVVLGSGGVGKSALTVQFVQGIFVEKYDPTIEDSYRKQVEVDAQQCMLILD
TAGTEQFTAMRDLYMKNQGQFALVYSITAQSTFNDLQDLREQILRVKDTDDVPMILV
GNKCDLEDERVVGKEQGQNLARQWNNCAFLESSAKSKINVNEIFYDLVRQINRKTP
VPGKARKKSSCQLLTRTRPLEQKLISEEDLAANDILDYKDDDDKV

Purity

> 80% as determined by SDS-PAGE and Coomassie blue staining

 Tel: 1-631-559-9269 1-516-512-3133

 Email: info@creative-biomart.com  Fax: 1-631-938-8127

 45-1 Ramsey Road, Shirley, NY 11967, USA

Stability	Stable for 3 months from receipt of products under proper storage and handling conditions.
Storage	Store at -80 centigrade. Avoid repeated freeze-thaw cycles.
Concentration	50 µg/mL as determined by BCA
Storage Buffer	100 mM glycine, 25 mM Tris-HCl, pH 7.3.

GENE INFORMATION

Gene Name	RAP1B RAP1B, member of RAS oncogene family [Homo sapiens (human)]
Official Symbol	RAP1B
Synonyms	RAP1B; RAP1B, member of RAS oncogene family; ras-related protein Rap-1b; DKFZp586H0723; K REV; RAL1B; RAS-related protein RAP1B; small GTP binding protein; GTP-binding protein smg p21B; Ras family small GTP binding protein RAP1B; K-REV; FLJ18601;
Gene ID	5908
mRNA Refseq	NM_001010942
Protein Refseq	NP_001010942
MIM	179530
UniProt ID	P61224

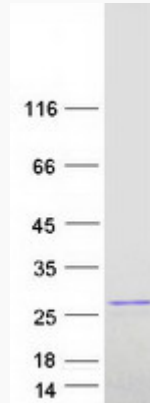
 Tel: 1-631-559-9269 1-516-512-3133

 Email: info@creative-biomart.com  Fax: 1-631-938-8127

 45-1 Ramsey Road, Shirley, NY 11967, USA



SDS-PAGE



Tel: 1-631-559-9269 1-516-512-3133

Email: info@creative-biomart.com Fax: 1-631-938-8127

45-1 Ramsey Road, Shirley, NY 11967, USA