

Recombinant Human RASA1 Protein, GST-tagged

Cat. No. RASA1-28974TH **Lot. No.** (See product label)

SPECIFICATION

Product Overview	Recombinant Human RASA1(1 a.a. - 870 a.a.) fused with GST tag at N-terminal was expressed in Wheat Germ.
Species	Human
Source	Wheat Germ
Protein Length	1 a.a. - 870 a.a.
Form	50 mM Tris-HCl, 10 mM reduced Glutathione, pH=8.0 in the elution buffer.
Molecular Mass	126.8 kDa
AA Sequence	<p>MKGWYHGKLDRTIAEERLRQAGKSGSYLIRESDRRPGSFVLSFSLSQMNVVNHFRIIA MCGDYIIGRRFSSLSDLIGYYSHVSCLLKGEKLLYPVAPPEPVEDRRRVRILPYTK VPDTDEISFLKGD MFIVHNELEDGWMWVTNLRTDEQGLIVEDLVEEVGREEDPHEG KIWFHGKISKQEAYNLLMTVGQVCSFLVRPSDNTPGDYSLYFRTNENIQRFKICPTP NNQFMMGGRYYNSIGDIIDHYRKEQIVEGYLKEPVPMDQEQVLNDTVDGKEIYNT IRRKTKDAFYKNIVKKG YLLKKGKGRWKNLYFILEGSDAQLIYFESEKRATKPKGLID LSVCSVYVVHDSLFRPNCFQIVVQHFSEEHYIFYFAGETPEQAEDWMKGLQAFCN LRKSSPGTSNKRLRQVSSLVLHIEEAHKLPVKHFTNPYCNILNSVQVAKTHAREGQ NPVWSEEFVFDDLPPDINRFEITLSNKT KSKDPDILFMRCQLSRLQKGHATDEWFL LSSHIPLKGI EPGSLRVRARYSMEKIMPEEEYSEFKELILQKELHV VYALSHVCGQDR TLLASILLRIFLHEKLESLLLCTLN DREISMEDEATTLFRATTLASTLMEQYMKATATQF VHHALKDSILKIMESKQSCELSPSKLEKNEDVNTNLTHLLNLSSELVEKIFMASEILPPT</p>

 Tel: 1-631-559-9269 1-516-512-3133

 Email: info@creative-biomart.com  Fax: 1-631-938-8127

 45-1 Ramsey Road, Shirley, NY 11967, USA

LRYIYGCLQKSVQHKWPTNTTMRTRVVSGFVFLRLICPAILNPRMFNIISDSPSIAAR
 TLILVAKSVQNLANLVEFGAKEPYMEGVNPFIKSNKHRMIMFLDELGNVPELPDTEH
 SRTDLSRDLAALHEICVAHSDELRTLSNERGAQQHVLLKLLAITELLQQKQNQYTKT
 NDVR

Applications Enzyme-linked Immunoabsorbent; Assay Western Blot (Recombinant protein);
 Antibody Production; Protein Array

Notes Best use within three months from the date of receipt of this protein.

Storage Store at -80 centigrade. Aliquot to avoid repeated freezing and thawing.

GENE INFORMATION

Gene Name [RASA1 RAS p21 protein activator \(GTPase activating protein\) 1 \[Homo sapiens \]](#)

Official Symbol [RASA1](#)

Synonyms RASA1; RAS p21 protein activator (GTPase activating protein) 1; RASA; ras
 GTPase-activating protein 1; capillary malformation arteriovenous malformation; CM
 AVM; GAP; p120GAP; p120RASGAP; triphosphatase-activating protein; PKWS;
 CMAVM; CM-AVM; RASGAP; DKFZp434N071;

Gene ID [5921](#)

mRNA Refseq [NM_022650](#)

Protein Refseq [NP_072179](#)

MIM [139150](#)

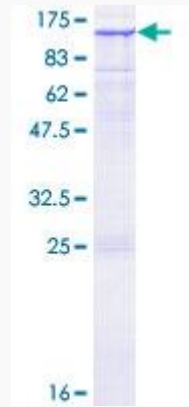
 Tel: 1-631-559-9269 1-516-512-3133

 Email: info@creative-biomart.com
 Fax: 1-631-938-8127

 45-1 Ramsey Road, Shirley, NY 11967, USA

UniProt ID

P20936



 Tel: 1-631-559-9269 1-516-512-3133

 Email: info@creative-biomart.com  Fax: 1-631-938-8127

 45-1 Ramsey Road, Shirley, NY 11967, USA