

Recombinant Human RASA1 Protein, Myc/DDK-tagged, C13 and N15-labeled

Cat. No. RASA1-3433H **Lot. No.** (See product label)

SPECIFICATION

Product Overview	RASA1 MS Standard C13 and N15-labeled recombinant protein (NP_002881) with a C-terminal MYC/DDK tag, was expressed in HEK293 cells.
Species	Human
Source	HEK293
Description	<p>The protein encoded by this gene is located in the cytoplasm and is part of the GAP1 family of GTPase-activating proteins. The gene product stimulates the GTPase activity of normal RAS p21 but not its oncogenic counterpart. Acting as a suppressor of RAS function, the protein enhances the weak intrinsic GTPase activity of RAS proteins resulting in the inactive GDP-bound form of RAS, thereby allowing control of cellular proliferation and differentiation. Mutations leading to changes in the binding sites of either protein are associated with basal cell carcinomas. Mutations also have been associated with hereditary capillary malformations (CM) with or without arteriovenous malformations (AVM) and Parkes Weber syndrome. Alternative splicing results in two isoforms where the shorter isoform, lacking the N-terminal hydrophobic region but retaining the same activity, appears to be abundantly expressed in placental but not adult tissues.</p>
Molecular Mass	116.4 kDa
AA Sequence	MMAAEAGSEEGGPVTAGAGGGGAAAGSSAYPAVCRVKIPAALPVAAPYPGLVET

 Tel: 1-631-559-9269 1-516-512-3133

 Email: info@creative-biomart.com  Fax: 1-631-938-8127

 45-1 Ramsey Road, Shirley, NY 11967, USA

GVAGTLGGGAALGSEFLGAGSVAGALGGAGLTGGGTAAGVAGAAAGVAGAAVAG
 PSGDMALTKLPTSLAETLPGGGGFPPPLPPPPYLPPLGAGLGTVDEGDSLDPPEYE
 EEEVAIPLTAPPTNQWYHGKLDRTIAEERLRQAGKSGSYLIRESDRRPGSFVLSFLS
 QMNVVNHFRIIAMCGDYIYIGRRFSSLSDLIGYYSHVSCLLKGEKLLYPVAPPEPVED
 RRRVRAILPYTKVPDTDEISFLKGD MFIVHNELEDGMMWVTNLRTDEQGLIVEDLVE
 EVGREEDPHEGKIWFHGKISKQEAYNLLMTVGQVCSFLVRPSDNTPGDYSLYFRNTN
 ENIQRFKICPTPNNQFMMGGRYYNSIGDIIDHYRKEQIVEGYLKEPVPMQDQEQLV
 NDTV DGKEIYNTIRRKTKDAFYKNIVKKG YLLKKGKGRWKNLYFILEGSDAQLIYFE
 SEKRA TKPKGLIDLSVCSVYVVHDSLFGRP NCFQIVVQHFSEEHYIFYFAGETPEQAE
 DWMKGLQAF CNLRKSSPGT SNKRLRQVSSLVLHIEEAHKLPVKHFTNPYCNIYLN SV
 QVAKTHAREGQNPVWSEEFVDDLPPDINRFEITLSNKT KSKDPDILFMRCQLSRL
 QKGHATDEWFLLSSHIP LKGIPEGSLRVRARYSMEKIMPEEEYSEFKELILQKELHVV
 YALSHVCGQDR TLLASILLRIFLHEKLESLLLCTLN DREISMEDEATTLFRATTLASTLM
 EQYMKATATQFVHHALKDSILKIMESKQSCELSPSKLEKNEDVNTNLTHLLNISELV
 EKIFMASEILPPTLR YIYGCLQKSVQHKWPTNTTMRTRVVSGFVFLRLICPAILNPRMF
 NII SDSPSPIAARTLILVAKSVQNLANLVEFGAKEYMEGVNPFIKSNKHRMIMFLDEL
 GNVPELPDTTEHSRTDLSRDLAALHEICVAHSDELRTLSNERGAQQHV LKLLAITEL
 LQQKQNQYTKTNDVRS GPTRTRPLEQKLISEEDLAANDILDYKDDDDKV

Purity	> 80% as determined by SDS-PAGE and Coomassie blue staining
Stability	Stable for 3 months from receipt of products under proper storage and handling conditions.
Storage	Store at -80 centigrade. Avoid repeated freeze-thaw cycles.
Concentration	50 µg/mL as determined by BCA
Storage Buffer	100 mM glycine, 25 mM Tris-HCl, pH 7.3.

 Tel: 1-631-559-9269 1-516-512-3133

 Email: info@creative-biomart.com  Fax: 1-631-938-8127

 45-1 Ramsey Road, Shirley, NY 11967, USA

GENE INFORMATION

Gene Name RASA1 RAS p21 protein activator 1 [Homo sapiens (human)]

Official Symbol RASA1

Synonyms RASA1; RAS p21 protein activator (GTPase activating protein) 1; RASA; ras GTPase-activating protein 1; capillary malformation arteriovenous malformation; CM AVM; GAP; p120GAP; p120RASGAP; triphosphatase-activating protein; PKWS; CMAVM; CM-AVM; RASGAP; DKFZp434N071;

Gene ID 5921

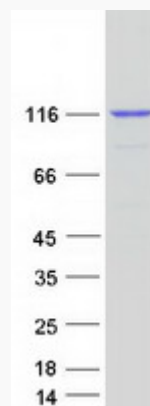
mRNA Refseq NM_002890

Protein Refseq NP_002881

MIM 139150

UniProt ID P20936

SDS-PAGE



 Tel: 1-631-559-9269 1-516-512-3133

 Email: info@creative-biomart.com  Fax: 1-631-938-8127

 45-1 Ramsey Road, Shirley, NY 11967, USA