

## Recombinant Human RASGRF2 Protein, His-tagged

Cat. No. RASGRF2-01H Lot. No. (See product label)

### SPECIFICATION

<b>Product Overview</b>	Recombinant Human RASGRF2 protein(NP_008840.1), fused to His-tag, was expressed in E. coli.
<b>Species</b>	Human
<b>Source</b>	E.coli
<b>Description</b>	RAS GTPases cycle between an inactive GDP-bound state and an active GTP-bound state. This gene encodes a calcium-regulated nucleotide exchange factor activating both RAS and RAS-related protein, RAC1, through the exchange of bound GDP for GTP, thereby, coordinating the signaling of distinct mitogen-activated protein kinase pathways.
<b>Form</b>	PBS buffer
<b>Molecular Mass</b>	The protein has a calculated MW of 72 kDa.
<b>AA Sequence</b>	MHHHHHHHHMIKSDARLHKDDTDICFSKTLNSCKVPQIRYASVERLLERLTDLRFLSI DFLNTFLHTYRIFTTAAVVLGKLSDIYKRPFSTIPVRSLELFFATSQNNRGEHLVDGKS PRLCRKFSSPPPLAVSRTSSPVRRARKLSLTSPLNSKIGALDLTSSSPTTTTQSPAAS PPPHTGQIPLDLRGLSSPEQSPGTVENVDNPRVDLCNKLKRSIQKAVLESAPADR AGVESSPAADTTELSPCRSPSTPRHLRYRQPGGQTADNAHCSVSPASAFAIATAAA GHGSPPGFNNTERTCDKEFIIRRTATNRVLNVLRHVWSKHAQDFELNNEKMNVLN LLEEVLDPDLLPQERKAAANILRALSQDDQDDIHLKLEDIIQMTDCMKAECFESLSA MELAEQITLLDHVIFRSIPYEEFLGQGWMKLDKNERTPYIMKTSQHFNDMSNLVASQI

 Tel: 1-631-559-9269 1-516-512-3133

 Email: [info@creative-biomart.com](mailto:info@creative-biomart.com)  Fax: 1-631-938-8127

 45-1 Ramsey Road, Shirley, NY 11967, USA

MNYADVSSRANAIEKWVAVADICRCLHNYNGVLEITSALNRS AIYRLKKTWAKVSKQ  
 TKALMDKLQKTVSSEGRFKNLRETLKNCNPPAVPYLGMYLTDLAFIEEGTPNFTEEG  
 LVNFSKMRMISHIIREIRQFQQTSYRIDHQPKVAQYLLDKDLIIDEDTLYELSLKIEPRL  
 PA

**Purity** > 95% by SDS-PAGE

**Storage** Store it under sterile conditions at -20 to -80 °C. It is recommended that the protein be aliquoted for optimal storage. Avoid repeated freeze-thaw cycles.

**Concentration** 0.2 mg/ml

## GENE INFORMATION

**Gene Name** [RASGRF2 Ras protein specific guanine nucleotide releasing factor 2 \[ Homo sapiens \(human\) \]](#)

**Official Symbol** [RASGRF2](#)

**Synonyms** GRF2; RAS-GRF2

**Gene ID** [5924](#)

**mRNA Refseq** [NM\\_006909.3](#)

**Protein Refseq** [NP\\_008840.1](#)

**MIM** [606614](#)

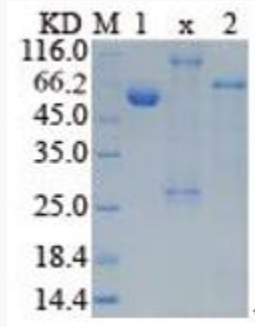
**UniProt ID** [O14827](#)

 Tel: 1-631-559-9269 1-516-512-3133

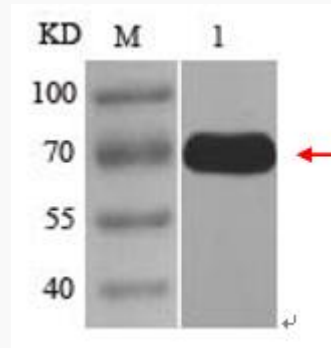
 Email: [info@creative-biomart.com](mailto:info@creative-biomart.com)  Fax: 1-631-938-8127

 45-1 Ramsey Road, Shirley, NY 11967, USA

**SDS-PAGE of  
RASGRF2-01H**



**Western blot of  
RASGRF2-01H**



 Tel: 1-631-559-9269 1-516-512-3133

 Email: [info@creative-biomart.com](mailto:info@creative-biomart.com)  Fax: 1-631-938-8127

 45-1 Ramsey Road, Shirley, NY 11967, USA