

Recombinant Human RASSF2 Protein, MYC/DDK-tagged, C13 and N15-labeled

Cat. No. RASSF2-178H Lot. No. (See product label)

SPECIFICATION

Product Overview	RASSF2 MS Standard C13 and N15-labeled recombinant protein (NP_055552) with a C-terminal MYC/DDK tag, was expressed in HEK293 cells.
Species	Human
Source	HEK293
Description	This gene encodes a protein that contains a Ras association domain. Similar to its cattle and sheep counterparts, this gene is located near the prion gene. Two alternatively spliced transcripts encoding the same isoform have been reported. [provided by RefSeq, Jul 2008]
Molecular Mass	37.6 kDa
AA Sequence	MDYSHQTSLVPCGQDKYISKNELLLHLKTYNLYYEGQNLQLRHREEEDEFIVEGLLNI SWGLRRPIRLQMDDNERIRPPSSSSWHSGCNLGAQGTTLKPLTVPKVQISEVDA PPEGDQMPSSTDSRGLKPLQEDTPQLMRTRSDVGVRRRGNVTRTPSDQRRIRRRHRF SINGHFYNHKTSVFTPAYGSVTNVRINSTMTTPQVLKLLLNKFKIENSAEEFALYVVH TSGEKQKLKATDYPLIARILQGPCEQISKVFLMEKDQVEEVTYDVAQYIKFEMPVLKS FIQKLQEEEDREVKKLMRKYTVLRLMIRQRLEEIAETPATITRTRPLEQKLISEEDLAA NDILDYKDDDDKV
Purity	> 80% as determined by SDS-PAGE and Coomassie blue staining

 Tel: 1-631-559-9269 1-516-512-3133

 Email: info@creative-biomart.com  Fax: 1-631-938-8127

 45-1 Ramsey Road, Shirley, NY 11967, USA

Stability	Stable for 3 months from receipt of products under proper storage and handling conditions.
Storage	Store at -80 centigrade. Avoid repeated freeze-thaw cycles.
Concentration	50 µg/mL as determined by BCA
Storage Buffer	100 mM glycine, 25 mM Tris-HCl, pH 7.3.

GENE INFORMATION

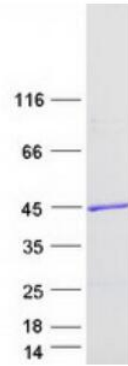
Gene Name	RASSF2 Ras association domain family member 2 [Homo sapiens (human)]
Official Symbol	RASSF2
Synonyms	RASSF2; Ras association domain family member 2; CENP-34; RASFADIN; ras association domain-containing protein 2; Ras association (RalGDS/AF-6) domain family 2; Ras association (RalGDS/AF-6) domain family member 2; centromere protein 34
Gene ID	9770
mRNA Refseq	NM_014737
Protein Refseq	NP_055552
MIM	609492
UniProt ID	P50749

 Tel: 1-631-559-9269 1-516-512-3133

 Email: info@creative-biomart.com  Fax: 1-631-938-8127

 45-1 Ramsey Road, Shirley, NY 11967, USA

SDS-PAGE



 Tel: 1-631-559-9269 1-516-512-3133

 Email: info@creative-biomart.com  Fax: 1-631-938-8127

 45-1 Ramsey Road, Shirley, NY 11967, USA