

Recombinant Human RASSF3 Protein, Myc/DDK-tagged, C13 and N15-labeled

Cat. No. RASSF3-6690H **Lot. No.** (See product label)

SPECIFICATION

Product Overview	RASSF3 MS Standard C13 and N15-labeled recombinant protein (NP_835463) with a C-terminal MYC/DDK tag, was expressed in HEK293 cells.
Species	Human
Source	HEK293
Description	The RAS oncogene is mutated in nearly one-third of all human cancers. Members of the RAS superfamily are plasma membrane GTP-binding proteins that modulate intracellular signal transduction pathways. A subfamily of RAS effectors, including RASSF3, share a RAS association (RA) domain.
Molecular Mass	27.6 kDa
AA Sequence	MSSGYSSLEEDAEDFFFTARTSFFRRAPQGKPRSGQQDVEKEKETHSYLSKEEIKE KVHKYNLAVTDKLMKMTLNSNGIYTGFIKVMELCKPPQTSPNSGKLSPPSSNGCMNTL HISSTNTVGEVIEALLKKFLVTESPAKFALYKRCHREDQVYACKLSDREHPLYLRLVA GPRTDTLSFVLREHEIGEWAFSLPELQNFLRILDKEEDEQLQNLKRRYTAYRQKLE EALREVVWKPDRTRPLEQKLISEEDLAANDILDYKDDDDKV
Purity	> 80% as determined by SDS-PAGE and Coomassie blue staining
Stability	Stable for 3 months from receipt of products under proper storage and handling conditions.

 Tel: 1-631-559-9269 1-516-512-3133

 Email: info@creative-biomart.com  Fax: 1-631-938-8127

 45-1 Ramsey Road, Shirley, NY 11967, USA

Storage Store at -80 centigrade. Avoid repeated freeze-thaw cycles.

Concentration 50 µg/mL as determined by BCA

Storage Buffer 100 mM glycine, 25 mM Tris-HCl, pH 7.3.

GENE INFORMATION

Gene Name [RASSF3 Ras association domain family member 3 \[Homo sapiens \(human\) \]](#)

Official Symbol [RASSF3](#)

Synonyms RASSF3; Ras association (RalGDS/AF-6) domain family member 3; ras association domain-containing protein 3; Ras association (RalGDS/AF-6) domain family 3; RASSF5; MGC119194; MGC119195; MGC119197;

Gene ID [283349](#)

mRNA Refseq [NM_178169](#)

Protein Refseq [NP_835463](#)

MIM [607019](#)

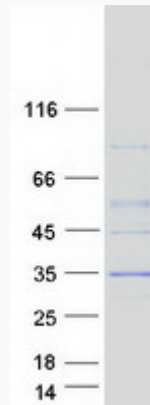
UniProt ID [Q86WH2](#)

 Tel: 1-631-559-9269 1-516-512-3133

 Email: info@creative-biomart.com  Fax: 1-631-938-8127

 45-1 Ramsey Road, Shirley, NY 11967, USA

SDS-PAGE



 Tel: 1-631-559-9269 1-516-512-3133

 Email: info@creative-biomart.com  Fax: 1-631-938-8127

 45-1 Ramsey Road, Shirley, NY 11967, USA