

## Recombinant Human RASSF4 protein, His-tagged

**Cat. No.** RASSF4-3426H **Lot. No.** (See product label)

### SPECIFICATION

<b>Product Overview</b>	Recombinant Human RASSF4 protein(1-321 aa), fused with N-terminal His tag, was expressed in E. coli.
<b>Species</b>	Human
<b>Source</b>	E. coli
<b>ProteinLength</b>	1-321 aa
<b>Form</b>	The purified protein was lyophilized from sterile phosphate-buffered saline (PBS: 58 mM Na <sub>2</sub> HPO <sub>4</sub> , 17 mM NaH <sub>2</sub> PO <sub>4</sub> , 68 mM NaCl, pH 7.4). Prior to lyophilization, 5% (w/v) trehalose and 5% (w/v) mannitol were incorporated as cryoprotective excipients. The protein was eluted with a buffer containing 300 mM imidazole.
<b>AASequence</b>	MKEDCLPSSHVPISDSKSIQKSELLGLLKTYNCYHEGKSFQLRHREEEGTLIIIEGLLNI AWGLRRPIRLQMQDDREQVHLPSTSWMPRRPSCPLKEPSPQNGNITAQGPSIQPV HKAESSTDSSGPLEEAEAEAPQLMRTKSDASCMSQRRPKCRAPGEAQRIRRHRSIN GHFYNHKTSVFTPAYGSVTNVRVNSTMTTLQVLTLNKNFRVEDGPSEFALYIVHES GERTKLKDCEYPLISRILHGPCEKIARIFLMEADLGVEVPHEVAQYIKFEMPVLDSFVE KLKEEEEREIIKLTMKFQALRLTMLQRLEQLVEAK
<b>Purity</b>	85%, by SDS-PAGE.
<b>Storage</b>	Store at 2-8°C for 1-2 weeks. Aliquot and store at -20°C to -80°C for up to 3 months, reconstitution with sterile water and addition of an equal volume of glycerol. Avoid

 Tel: 1-631-559-9269 1-516-512-3133

 Email: [info@creative-biomart.com](mailto:info@creative-biomart.com)  Fax: 1-631-938-8127

 45-1 Ramsey Road, Shirley, NY 11967, USA

repeat freeze-thaw cycles.

**Reconstitution**

It is recommended that sterile water be added to the vial to prepare a stock solution of 0.25 ug/ul. Centrifuge the vial at 4°C before opening to recover the entire contents.

## GENE INFORMATION

**Gene Name** [RASSF4 Ras association \(RalGDS/AF-6\) domain family member 4 \[ Homo sapiens \]](#)

**Official Symbol** [RASSF4](#)

**Synonyms** RASSF4; Ras association (RalGDS/AF-6) domain family member 4; ras association domain-containing protein 4; AD037; MGC44914; tumor suppressor RASSF4; Ras association domain family 4; Ras association (RalGDS/AF-6) domain family 4;

**mRNA Refseq** [NM\\_032023](#)

**Protein Refseq** [NP\\_114412](#)

**MIM** [610559](#)

**UniProt ID** [Q9H2L5](#)

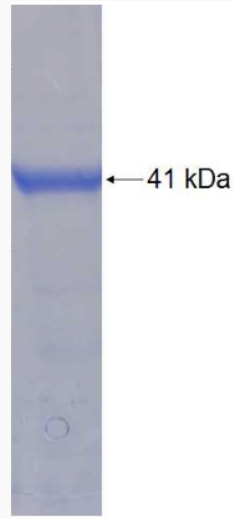
**Gene ID** [83937](#)

 Tel: 1-631-559-9269 1-516-512-3133

 Email: [info@creative-biomart.com](mailto:info@creative-biomart.com)  Fax: 1-631-938-8127

 45-1 Ramsey Road, Shirley, NY 11967, USA

**SDS-PAGE**



 Tel: 1-631-559-9269 1-516-512-3133

 Email: [info@creative-biomart.com](mailto:info@creative-biomart.com)  Fax: 1-631-938-8127

 45-1 Ramsey Road, Shirley, NY 11967, USA