

Recombinant Human RASSF5, GST-tagged

Cat. No. RASSF5-1071H Lot. No. (See product label)

SPECIFICATION

Species Human

Source E.coli

Description

Nore1 (Novel Ras effector 1) is a non-catalytic 413 amino acid polypeptide that contains several PXXP motifs, a central C1 zinc finger and a Ras-Rap association domain (RA) at its C-terminus. Consistently, Nore1 interacts in a GTP-dependent fashion with a number of Ras-family GTPases, including Ras itself, M-Ras, TC21 and Rap2A. The C-terminal portion of Nore1 exhibits 50 % identity with members of the RASSF Family of putative tumour suppressor proteins. Nore1 mediates the antiproliferative and/or pro-apoptotic effects of Ras in certain cell types, at least partly by activating the MST1 kinase (Mammalian Ste20-like kinase). Recent reports on the epigenetic silencing of Nore1 in a variety of human tumours have made a strong case for a role of Nore1 as a tumour suppressor. Recombinant Human RASSF5 has a molecular weight 47 kDa with GST-tag.

Form Liquid. Supplied in PBS supplemented with 1 mM EDTA.

Purity >90% by SDS-PAGE.

Usage For in vitro use only.

Storage Quality guaranteed for 12 months store at - 80°C. Avoid freeze / thaw cycles.

GENE INFORMATION

 Tel: 1-631-559-9269 1-516-512-3133

 Email: info@creative-biomart.com  Fax: 1-631-938-8127

 45-1 Ramsey Road, Shirley, NY 11967, USA

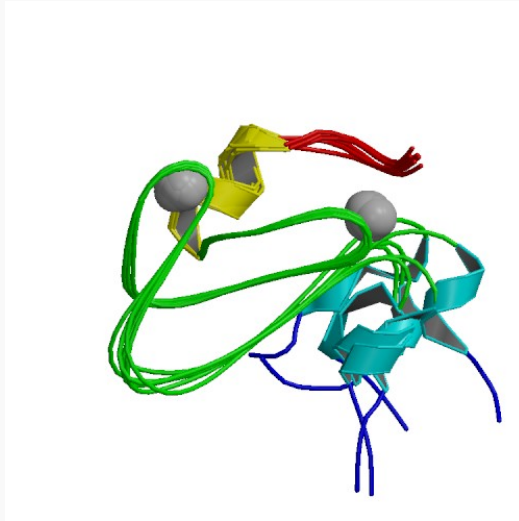
| | |
|----------------------------|---|
| Gene Name | RASSF5 Ras association (RalGDS/AF-6) domain family member 5 [Homo sapiens] |
| Synonyms | RASSF5; Ras association (RalGDS/AF-6) domain family member 5; RAPL; Maxp1; NORE1; NORE1A; NORE1B; RASSF3; MGC10823; MGC17344; Ras association domain-containing protein 5; New ras effector 1; Regulator for cell adhesion and polarization enriched in lymphoid tissues; MGC10823; MGC17344; OTTHUMP00000034534; OTTHUMP00000034535; Rap1-binding protein; Ras association (RalGDS/AF-6) domain family 5; Ras effector-like protein; novel Ras effector 1; tumor suppressor RASSF3; Rap1-binding protein |
| Gene ID | 83593 |
| mRNA Refseq | NM_182663 |
| Protein Refseq | NP_872604 |
| MIM | 607020 |
| UniProt ID | Q8WWW0 |
| Chromosome Location | 1q31 |
| Pathway | Leukocyte transendothelial migration; Non-small cell lung cancer; Pathways in cancer |
| Function | identical protein binding; metal ion binding; zinc ion binding |

 Tel: 1-631-559-9269 1-516-512-3133

 Email: info@creative-biomart.com  Fax: 1-631-938-8127

 45-1 Ramsey Road, Shirley, NY 11967, USA

PDB rendering based
on 2fnf.



 Tel: 1-631-559-9269 1-516-512-3133

 Email: info@creative-biomart.com  Fax: 1-631-938-8127

 45-1 Ramsey Road, Shirley, NY 11967, USA