

Recombinant Full Length Human RASSF8 Protein, C-Flag-tagged

Cat. No. RASSF8-1735HFL **Lot. No.** (See product label)

SPECIFICATION

Product Overview	Recombinant Full Length Human RASSF8 Protein, fused to Flag-tag at C-terminus, was expressed in Mammalian cells.
Species	Human
Source	Mammalian Cells
Description	This gene encodes a member of the Ras-association domain family (RASSF) of tumor suppressor proteins. This gene is essential for maintaining adherens junction function in epithelial cells and has a role in epithelial cell migration. It is a lung tumor suppressor gene candidate. A chromosomal translocation t(12;22)(p11.2;q13.3) leading to the fusion of this gene and the FBLN1 gene is found in a complex type of synpolydactyly. Multiple alternatively spliced transcript variants encoding different isoforms have been found for this gene.
Form	25 mM Tris HCl, pH 7.3, 100 mM glycine, 10% glycerol.
Molecular Mass	45.3 kDa
AA Sequence	MELKVVVDGVRIVCGVTEVTTTCQEVVIALAQAIGRTGRYTLIEKWRDTERHLAPHE NPIISLNKYGQYASDVQLILRRRTGPSLSERPTSDSVARIPERTLYRQSLPPLAKLRPQI DKSIKRREPKRKSLTFTGGAKGLMDIFGKGKETEFKQKVLNCKTTADELKKLIRLQT EKLQSIEKQLESNEIEIRFWEQKYNSNLEEEIVRLEQKIKRNDVEIEEEEFWENELQIE QENEKQLKDQLQEIRQKITECENKLDYLAQIRTMESGLEAEKLRQREVQEAQVNEEE

 Tel: 1-631-559-9269 1-516-512-3133

 Email: info@creative-biomart.com  Fax: 1-631-938-8127

 45-1 Ramsey Road, Shirley, NY 11967, USA

VKGGKIGKVKGEIDIQQGQSLRLENGIKAVERSLGGQATKRLQDKEQELEQLTKELRQV
 NLQQFIQQTGTKVTVLPAEPIEIEASHADIEREAPFQSGSLKRPGSSRQLPSNLRILQ
 NPISSGFNPEGIYVTRTRPLEQKLISEEDLAANDILDYKDDDDKV

Purity > 80% as determined by SDS-PAGE and Coomassie blue staining.

Stability Stable for 12 months from the date of receipt of the product under proper storage and handling conditions. Avoid repeated freeze-thaw cycles.

Storage Store at -80 centigrade.

Concentration >50 ug/mL as determined by microplate BCA method.

Preparation Recombinant protein was captured through anti-DDK affinity column followed by conventional chromatography steps.

Full Length Full L.

GENE INFORMATION

Gene Name [RASSF8 Ras association domain family member 8 \[Homo sapiens \(human\) \]](#)

Official Symbol [RASSF8](#)

Synonyms HOJ1; C12orf2

Gene ID [11228](#)

mRNA Refseq [NM_007211.5](#)

Protein Refseq [NP_009142.2](#)

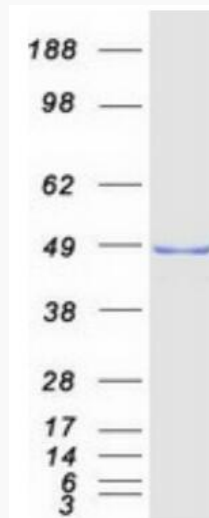
 Tel: 1-631-559-9269 1-516-512-3133

 Email: info@creative-biomart.com  Fax: 1-631-938-8127

 45-1 Ramsey Road, Shirley, NY 11967, USA

MIM 608231

UniProt ID Q8NHQ8



Coomassie blue staining of purified RASSF8 protein.

 Tel: 1-631-559-9269 1-516-512-3133

 Email: info@creative-biomart.com  Fax: 1-631-938-8127

 45-1 Ramsey Road, Shirley, NY 11967, USA