

Recombinant Human RASSF8 Protein, Myc/DDK-tagged, C13 and N15-labeled

Cat. No. RASSF8-2343H **Lot. No.** (See product label)

SPECIFICATION

Product Overview

RASSF8 MS Standard C13 and N15-labeled recombinant protein (NP_009142) with a C-terminal MYC/DDK tag, was expressed in HEK293 cells.

Species

Human

Source

HEK293

Description

This gene encodes a member of the Ras-association domain family (RASSF) of tumor suppressor proteins. This gene is essential for maintaining adherens junction function in epithelial cells and has a role in epithelial cell migration. It is a lung tumor suppressor gene candidate. A chromosomal translocation t(12;22)(p11.2;q13.3) leading to the fusion of this gene and the FBLN1 gene is found in a complex type of synpolydactyly. Multiple alternatively spliced transcript variants encoding different isoforms have been found for this gene.

Molecular Mass

45.4 kDa

AA Sequence

MELKVVVDGVRIVCGVTEVTTTCQEVVIALAQAIGRTGRYTLIEKWRDTERHLPHE
 NPIISLNKYGQYASDVQLILRRTGPSLSERPTSDSVARIPERTLYRQSLPPLAKLRPQI
 DKSIRREPKRKSLTFTGGAKGLMDIFGKGKETEFKQKVLNCKTTADELKKLIRLQT
 EKLQSIEKQLESNEIEIRFWEQKYNSNLEEEIVRLEQKIKRNDVEIEEEEFWENELQIE
 QENEKQLKDQLQEIRQKITECENKLDYLAQIRTMESGLEAEKLQREVQEAQVNEEE
 VKGKIGKVKGEIDIQQQSLRLENGIKAVERSLGGQATKRLQDKEQELEQLTKELRQV

 Tel: 1-631-559-9269 1-516-512-3133

 Email: info@creative-biomart.com  Fax: 1-631-938-8127

 45-1 Ramsey Road, Shirley, NY 11967, USA

NLQQFIQQTGTKVTVLPAEPIEIEASHADIERGIIILSDKQECKDTRTRPLEQKLISEEDL
AANDILDYKDDDDKV

Purity > 80% as determined by SDS-PAGE and Coomassie blue staining

Stability Stable for 3 months from receipt of products under proper storage and handling conditions.

Storage Store at -80 centigrade. Avoid repeated freeze-thaw cycles.

Concentration 50 µg/mL as determined by BCA

Storage Buffer 100 mM glycine, 25 mM Tris-HCl, pH 7.3.

GENE INFORMATION

Gene Name [RASSF8 Ras association domain family member 8 \[Homo sapiens \(human\) \]](#)

Official Symbol [RASSF8](#)

Synonyms RASSF8; Ras association (RalGDS/AF-6) domain family (N-terminal) member 8; C12orf2, chromosome 12 open reading frame 2; ras association domain-containing protein 8; HoJ 1; carcinoma-associated protein HOJ-1; HOJ1; C12orf2; FLJ11542; DKFZp434O0227;

Gene ID [11228](#)

mRNA Refseq [NM_007211](#)

Protein Refseq [NP_009142](#)

 Tel: 1-631-559-9269 1-516-512-3133

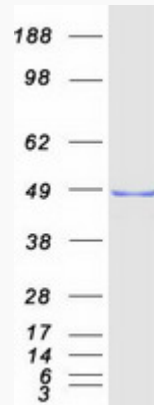
 Email: info@creative-biomart.com  Fax: 1-631-938-8127

 45-1 Ramsey Road, Shirley, NY 11967, USA

MIM 608231

UniProt ID Q8NHQ8

SDS-PAGE



 Tel: 1-631-559-9269 1-516-512-3133

 Email: info@creative-biomart.com  Fax: 1-631-938-8127

 45-1 Ramsey Road, Shirley, NY 11967, USA