

## Recombinant Human RASSF8 Protein, GST-tagged

Cat. No. RASSF8-493H Lot. No. (See product label)

### SPECIFICATION

<b>Product Overview</b>	Human C12orf2 full-length ORF ( AAH30021, 1 a.a. - 392 a.a.) recombinant protein with GST-tag at N-terminal.
<b>Species</b>	Human
<b>Source</b>	Wheat Germ
<b>Form</b>	50 mM Tris-HCl, 10 mM reduced Glutathione, pH=8.0 in the elution buffer.
<b>Molecular Mass</b>	68.86 kDa
<b>AA Sequence</b>	MELKVVVDGVQRIVCGVTEVTTTCQEVVIALAQAIGRTGRYTLIEKWRDTERHLAPHE NPIISLNKWGQYASDVQLILRRTGPSLSERPTSDSVARIPERTLYRQSLPPLAKLRPQI DKSIKRREPKRKSLTFTGGAKGLMDIFGKGKETEFKQKVLNNCKTTADELKKLIRLQT EKLQSIEKQLESNEIEIRFWEQKYNSNLEEEIVRLEQKIKRNDVEIEEEEFWENELQIE QENEKQLKDQLQEIRQKITECENKLDYLAQIRTMESGLEAEKLQREVQEAQVNEEE VKGKIGKVKGEIDIQQGQSLRLENGIKAVERSLGGQATKRLQDKEQELEQLTKELRQV NLQQFIQQTGTKVTVLPAEPIEIEASHADIERGIIILSDKQECKD
<b>Storage</b>	Store at -80 centigrade. Aliquot to avoid repeated freezing and thawing.
<b>Storage Buffer</b>	50 mM Tris-HCl, 10 mM reduced Glutathione, pH=8.0 in the elution buffer.

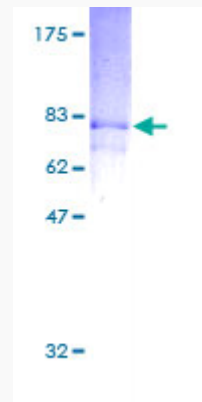
### GENE INFORMATION

 Tel: 1-631-559-9269 1-516-512-3133

 Email: [info@creative-biomart.com](mailto:info@creative-biomart.com)  Fax: 1-631-938-8127

 45-1 Ramsey Road, Shirley, NY 11967, USA

<b>Gene Name</b>	RASSF8 Ras association (RalGDS/AF-6) domain family (N-terminal) member 8 [ Homo sapiens ]
<b>Official Symbol</b>	RASSF8
<b>Synonyms</b>	RASSF8; Ras association (RalGDS/AF-6) domain family (N-terminal) member 8; C12orf2, chromosome 12 open reading frame 2; ras association domain-containing protein 8; HoJ 1; carcinoma-associated protein HOJ-1; HOJ1; C12orf2; FLJ11542; DKFZp434O0227;
<b>Gene ID</b>	11228
<b>mRNA Refseq</b>	NM_001164746
<b>Protein Refseq</b>	NP_001158218
<b>MIM</b>	608231
<b>UniProt ID</b>	Q8NHQ8



Tel: 1-631-559-9269 1-516-512-3133

Email: [info@creative-biomart.com](mailto:info@creative-biomart.com) Fax: 1-631-938-8127

45-1 Ramsey Road, Shirley, NY 11967, USA