

Recombinant Human RB1 Protein, GST-tagged

Cat. No. RB1-382H **Lot. No.** (See product label)

SPECIFICATION

Product Overview	Recombinant Human RB1 Protein is produced by in Wheat Germ (in vitro) expression system. This protein is fused with a GST tag at the N-terminal.
Species	Human
Source	Wheat Germ
ProteinLength	371-470 a.a.
Description	The protein encoded by this gene is a negative regulator of the cell cycle and was the first tumor suppressor gene found. The encoded protein also stabilizes constitutive heterochromatin to maintain the overall chromatin structure. The active, hypophosphorylated form of the protein binds transcription factor E2F1. Defects in this gene are a cause of childhood cancer retinoblastoma (RB), bladder cancer, and osteogenic sarcoma.
Form	50 mM Tris-HCl, 10 mM reduced Glutathione, pH=8.0 in the elution buffer.
Molecular Mass	36.74 kDa
AA Sequence	PHTPVRTVMNTIQQLMMILNSASDQPSENLISYFNNCTVNPKESILKRVKDIGYIFKEK FAKAVGQGCV EIGSQRYKLGVRLYYRVMESMLKSEEERLSI
Notes	Best use within three months from the date of receipt of this protein.

 Tel: 1-631-559-9269 1-516-512-3133

 Email: info@creative-biomart.com  Fax: 1-631-938-8127

 45-1 Ramsey Road, Shirley, NY 11967, USA

Storage Store at -80 centigrade. Aliquot to avoid repeated freezing and thawing.

GENE INFORMATION

Gene Name RB1 retinoblastoma 1 [Homo sapiens]

Official Symbol RB1

Synonyms RB1; retinoblastoma 1; OSRC, osteosarcoma; retinoblastoma-associated protein; RB; retinoblastoma susceptibility protein; pRb; OSRC; pp110; p105-Rb;

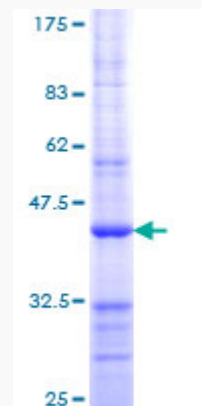
Gene ID 5925

mRNA Refseq NM_000321

Protein Refseq NP_000312

MIM 614041

UniProt ID P06400



 Tel: 1-631-559-9269 1-516-512-3133

 Email: info@creative-biomart.com  Fax: 1-631-938-8127

 45-1 Ramsey Road, Shirley, NY 11967, USA



12.5% SDS-PAGE Stained with Coomassie Blue.

 Tel: 1-631-559-9269 1-516-512-3133

 Email: info@creative-biomart.com  Fax: 1-631-938-8127

 45-1 Ramsey Road, Shirley, NY 11967, USA