

Recombinant Human RB1 protein, His-tagged

Cat. No. RB1-4558H **Lot. No.** (See product label)

SPECIFICATION

Product Overview	Recombinant Human RB1 protein(P06400)(769-921 aa), fused with C-terminal His tag, was expressed in E.coli.
Species	Human
Source	E.coli
ProteinLength	769-921 aa
Form	For liquid formulations, the standard storage buffer consists of a Tris or PBS based solution supplemented with 5-50% glycerol. When provided as lyophilized powder, the product undergoes freeze-drying from a Tris- or PBS-based formulation containing 6% trehalose, adjusted to pH 8.0 prior to the lyophilization process.
Molecular Mass	24.0 kDa
AASequence	LQYASTRPPTLSPIPHIPRSPYKFPSSPLRIPGGNIYISPLKSPYKISEGLPTPTKMTPR SRILVSI GESFGTSEKFQKINQMVCNSDRVLKRSAEGSNPPKPLKLRFDIEGSDEAD GSKHLPGESKFQQKLAEMTSTRTRMQKQKMNDMSMD
Purity	Greater than 85% as determined by SDS-PAGE.
Storage	Store at -20°C/-80°C upon receipt, aliquoting is necessary for mutiple use. Avoid repeated freeze-thaw cycles.

 Tel: 1-631-559-9269 1-516-512-3133

 Email: info@creative-biomart.com  Fax: 1-631-938-8127

 45-1 Ramsey Road, Shirley, NY 11967, USA

Reconstitution Please reconstitute protein in deionized sterile water to a concentration of 0.1-1.0 mg/mL. Aliquot for long-term storage at -80°C.

GENE INFORMATION

Gene Name [RB1 retinoblastoma 1 \[Homo sapiens \]](#)

Official Symbol [RB1](#)

Synonyms RB1; retinoblastoma 1; OSRC, osteosarcoma; retinoblastoma-associated protein; RB; retinoblastoma susceptibility protein; pRb; OSRC; pp110; p105-Rb;

Gene ID [5925](#)

mRNA Refseq [NM_000321](#)

Protein Refseq [NP_000312](#)

MIM [614041](#)

UniProt ID [P06400](#)

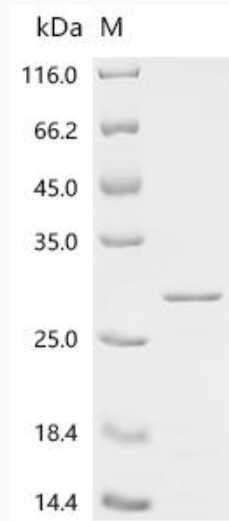
 Tel: 1-631-559-9269 1-516-512-3133

 Email: info@creative-biomart.com  Fax: 1-631-938-8127

 45-1 Ramsey Road, Shirley, NY 11967, USA



SDS-PAGE



Tel: 1-631-559-9269 1-516-512-3133

Email: info@creative-biomart.com Fax: 1-631-938-8127

45-1 Ramsey Road, Shirley, NY 11967, USA