

Recombinant Human RB1 Protein (Gln639-Thr778), N-GST tagged

Cat. No. RB1-6150H Lot. No. (See product label)

SPECIFICATION

Product Overview	Recombinant human RB1 (Gln639-Thr778) fused with the N-GST tag was expressed in E. coli.
Species	Human
Source	E.coli
ProteinLength	Gln639-Thr778
Form	Lyophilized powder/frozen liquid
Molecular Mass	43.69 kDa
Purity	> 90 % as determined by SDS-PAGE
Notes	For research use only.
Storage	Use a manual defrost freezer and avoid repeated freeze thaw cycles. Store at 2 to 8 centigrade for one week. Store at -20 to -80 centigrade for twelve months from the date of receipt.
Storage Buffer	0.01M PBS, pH 7.4, 0.02 % NLS
Reconstitution	Reconstitute in sterile water for a stock solution.

 Tel: 1-631-559-9269 1-516-512-3133

 Email: info@creative-biomart.com  Fax: 1-631-938-8127

 45-1 Ramsey Road, Shirley, NY 11967, USA

Shipping They are shipped out with dry ice/blue ice unless customers require otherwise.

GENE INFORMATION

Gene Name RB1 retinoblastoma 1 [Homo sapiens (human)]

Official Symbol RB1

Synonyms RB1; retinoblastoma 1; OSRC, osteosarcoma; retinoblastoma-associated protein; RB; retinoblastoma susceptibility protein; pRb; OSRC; pp110; p105-Rb;

Gene ID 5925

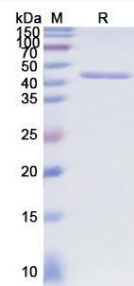
mRNA Refseq NM_000321

Protein Refseq NP_000312

MIM 614041

UniProt ID P06400

SDS-PAGE



Tel: 1-631-559-9269 1-516-512-3133

Email: info@creative-biomart.com Fax: 1-631-938-8127

45-1 Ramsey Road, Shirley, NY 11967, USA