

Recombinant Human RB1 protein, His-tagged

Cat. No. RB1-654H Lot. No. (See product label)

SPECIFICATION

Product Overview	Recombinant Human RB1 protein is produced by E. coli expression system. This protein is fused with a His tag at the N-terminal.
Species	Human
Source	E.coli
ProteinLength	Ile753-Lys928
Form	PBS, pH7.4, containing 0.01% SKL, 1mM DTT, 5% Trehalose and Proclin300.
Molecular Mass	21.4 kDa
Endotoxin	<1.0EU per 1g (determined by the LAL method)
Purity	> 95%
Applications	Positive Control; Immunogen; SDS-PAGE; WB.
Stability	Samples are stable for up to twelve months from date of receipt at -70 centigrade.
Storage	Store it under sterile conditions at -20 centigrade to -80 centigrade. It is recommended that the protein be aliquoted for optimal storage. Avoid repeated freeze-thaw cycles.

 Tel: 1-631-559-9269 1-516-512-3133

 Email: info@creative-biomart.com  Fax: 1-631-938-8127

 45-1 Ramsey Road, Shirley, NY 11967, USA

Reconstitution It is recommended that sterile water be added to the vial to prepare a stock solution of 0.2 ug/ul. Centrifuge the vial at 4°C before opening to recover the entire contents.

GENE INFORMATION

Gene Name [RB1 retinoblastoma 1 \[Homo sapiens \]](#)

Official Symbol [RB1](#)

Synonyms RB1; retinoblastoma 1; retinoblastoma-associated protein; RB; retinoblastoma susceptibility protein; pRb; OSRC; pp110; p105-Rb;

Gene ID [5925](#)

mRNA Refseq [NM_000321](#)

Protein Refseq [NP_000312](#)

MIM [614041](#)

UniProt ID [P06400](#)

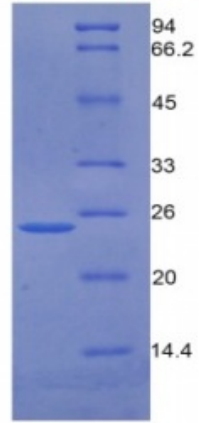
 Tel: 1-631-559-9269 1-516-512-3133

 Email: info@creative-biomart.com  Fax: 1-631-938-8127

 45-1 Ramsey Road, Shirley, NY 11967, USA



Human RB1 kDa



Tel: 1-631-559-9269 1-516-512-3133

Email: info@creative-biomart.com Fax: 1-631-938-8127

45-1 Ramsey Road, Shirley, NY 11967, USA