

Recombinant Full Length Human RBBP7 Protein, C-Flag-tagged

Cat. No. RBBP7-1890HFL **Lot. No.** (See product label)

SPECIFICATION

Product Overview	Recombinant Full Length Human RBBP7 Protein, fused to Flag-tag at C-terminus, was expressed in Mammalian cells.
Species	Human
Source	Mammalian Cells
Description	This protein is a ubiquitously expressed nuclear protein and belongs to a highly conserved subfamily of WD-repeat proteins. It is found among several proteins that binds directly to retinoblastoma protein, which regulates cell proliferation. The encoded protein is found in many histone deacetylase complexes, including mSin3 co-repressor complex. It is also present in protein complexes involved in chromatin assembly. This protein can interact with BRCA1 tumor-suppressor gene and may have a role in the regulation of cell proliferation and differentiation. Two transcript variants encoding different isoforms have been found for this gene.
Form	25 mM Tris HCl, pH 7.3, 100 mM glycine, 10% glycerol.
Molecular Mass	47.6 kDa
AA Sequence	MASKEMFEDTVEERVINEEYKIWKKNTPFLYDLVMTHALQWPSLTVQWLPEVTKPE GKDYALHWLVLGTH TSDEQNHLVVARVHIPNDDAQFDASHCDSKGEFGGFGSVT GKIECEIKINHEGEVNRARYMPQNPHIIA TKTPSSDVLVFDYTKHPAKPDPSGECNP DLRLRGHQKEGYGLSWNSNLSGHLLSASDDHTVCLWDINAGP KEGKIVDAKAIFTG

 Tel: 1-631-559-9269 1-516-512-3133

 Email: info@creative-biomart.com  Fax: 1-631-938-8127

 45-1 Ramsey Road, Shirley, NY 11967, USA

HSAVVEDVAWHLLHESLFGSVADDQKLMIWDRSNTTSKPSHLVDAHTAEVNCLSF
 NPYSEFILATGSADKTVALWDLRNLKLLHTFESHKDEIFQVHWSPHNETILASSGTD
 RRLNVWDLKIG EEQSAEDAEDGPPELLFIHGGHTAKISDFSWNPNEPWVICSVSE
 DNIMQIWQMAENIYNDEESDVTTSEL EGQGS TRTRPLEQKLISEEDLAANDILDYKD
 DDDKV

Purity > 80% as determined by SDS-PAGE and Coomassie blue staining.

Stability Stable for 12 months from the date of receipt of the product under proper storage and handling conditions. Avoid repeated freeze-thaw cycles.

Storage Store at -80 centigrade.

Concentration >50 ug/mL as determined by microplate BCA method.

Preparation Recombinant protein was captured through anti-DDK affinity column followed by conventional chromatography steps.

Protein Families Druggable Genome

Full Length Full L.

GENE INFORMATION

Gene Name [RBBP7 RB binding protein 7, chromatin remodeling factor \[Homo sapiens \(human\) \]](#)

Official Symbol [RBBP7](#)

Synonyms RbAp46

Gene ID [5931](#)

 Tel: 1-631-559-9269 1-516-512-3133

 Email: info@creative-biomart.com  Fax: 1-631-938-8127

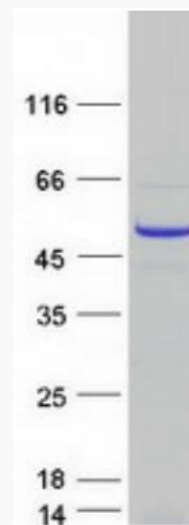
 45-1 Ramsey Road, Shirley, NY 11967, USA

mRNA Refseq [NM_002893.4](#)

Protein Refseq [NP_002884.1](#)

MIM [300825](#)

UniProt ID [Q16576](#)



Coomassie blue staining of purified RBBP7 protein.

 Tel: 1-631-559-9269 1-516-512-3133

 Email: info@creative-biomart.com  Fax: 1-631-938-8127

 45-1 Ramsey Road, Shirley, NY 11967, USA