

Recombinant Human RBM12 protein, GST-tagged

Cat. No. RBM12-322H Lot. No. (See product label)

SPECIFICATION

Product Overview	Recombinant Human RBM12 protein (1a.a.-932a.a.), fused to GST-tag at N-terminus, was expressed in Wheat Germ.
Species	Human
Source	Wheat Germ
ProteinLength	932
Description	This gene encodes a protein that contains several RNA-binding motifs, potential transmembrane domains, and proline-rich regions. This gene and the gene for copine I overlap at map location 20q11.21. Alternative splicing in the 5' UTR results in two transcript variants. Both variants encode the same protein.
Form	50 mM Tris-HCl, 10 mM reduced Glutathione, pH=8.0 in the elution buffer.
Molecular Mass	123.8 kDa
AA Sequence	MAVVIRLQGLPIVAGTMDIRHFFSGLTIPDGGVHIVGGELGEAFIVFATDEDARLGMM RTGGTIKGSKVTLSSKTEMQNMIELSRRRFETANLDIPPANASRSGPPPSSGMSS RVNLPTTVSNFNPNPSPSVVTATTSVHESNKNIQTFSTASVGTAPPNMGASFGSPTFS STVPSTASPMNTVPPPIPIPPAMPSLPPMPSIPPIVPPPVPTLPPVPPVPIPPVPS VPPMTPLPPMSGMPPLNPPPVAPLPAGMNGSGAPMNLNNLNPMFLGPLNPVNPI QMNSQSSVKLPINPDDLYVSVHGMFSA MENDVRDFFHGLRVDVHLLKDHVGR NNGNGLVKFLSPQDTFEALKRNRMLMIQRYVEVSPATERQWVAAGGHITFKQNMG

 Tel: 1-631-559-9269 1-516-512-3133

 Email: info@creative-biomart.com  Fax: 1-631-938-8127

 45-1 Ramsey Road, Shirley, NY 11967, USA

PSGQTHPPPQTLPRSKSPSGQKRSRSPHEAGFCVYLKGLPFEAENKHVIDFFKK
 LDIVEDSIYIAYGPNKATGEGFVEFRNEADYKAALCRHKQYMGNRFIQVHPITKKG
 MLEKIDMIRKRLQNFSDQREMILNPEGDVNSAKVCAHITNIPFSITKMDVLQFLEGIP
 VDENAHVHLVDNNGQGLGQALVQFKNEDDARKSERLHRKKNLNGREAFVHVVTLED
 MREIEKNPPAQGKKGLKMPVPGNPAVPGMPNAGLPGVGLPSAGLPGAGLPSTGLP
 GSAITSAGLPGAGMPSAGIPSAGGEEHAFLTVGSKEANNPPFNFPGNFGGSNAFG
 PPIPPPGLGGGAFGDARPGMPSVGNGLPGLGLDVPFGGGPNLNSGSPSGFGGG
 PQNFGNGPGSLGGPPGFGSGPPGLGSAPGHLGGPPAFGPGPGPGPGPIHIGG
 PPGFASSSGKPGPTVIKVNMPFTVSIIDEILDFYGYQVIPGSVCLKYNEKGMPTGE
 AMVAFESRDEATAAVIDLNDRPIGSRKVKLVLG

Applications

Enzyme-linked Immunoabsorbent Assay; Western Blot (Recombinant protein);
 Antibody Production; Protein Array

Storage

Store at -80 centigrade. Aliquot to avoid repeated freezing and thawing.

GENE INFORMATION

Gene Name

RBM12

Official Symbol

RBM12

Synonyms

SWAN; SCZD19; HRIHFB2091

Gene ID

10137

mRNA Refseq

NM_006047.6

Protein Refseq

NP_006038.2

MIM

607179

 Tel: 1-631-559-9269 1-516-512-3133

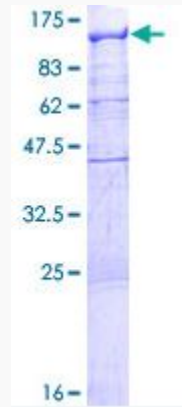
 Email: info@creative-biomart.com  Fax: 1-631-938-8127

 45-1 Ramsey Road, Shirley, NY 11967, USA

UniProt ID

Q9NTZ6

SDS-PAGE of
RBM12-322H



 Tel: 1-631-559-9269 1-516-512-3133

 Email: info@creative-biomart.com  Fax: 1-631-938-8127

 45-1 Ramsey Road, Shirley, NY 11967, USA