

Recombinant Human RBM47 Protein, Myc/DDK-tagged, C13 and N15-labeled

Cat. No. RBM47-4931H Lot. No. (See product label)

SPECIFICATION

Product Overview

RBM47 MS Standard C13 and N15-labeled recombinant protein (NP_061900) with a C-terminal MYC/DDK tag, was expressed in HEK293 cells.

Species

Human

Source

HEK293

Description

RBM47 (RNA Binding Motif Protein 47) is a Protein Coding gene. Diseases associated with RBM47 include Lung Acinar Adenocarcinoma. Gene Ontology (GO) annotations related to this gene include nucleic acid binding and nucleotide binding. An important paralog of this gene is A1CF.

Molecular Mass

56.7 kDa

AA Sequence

MTAEDSTAAMSSDSAAGSSAKVPEGVAGAPNEAALLALMERTGYSMVQENGQRKY
GGPPPGWEGPHPQRGCEVFGKIPRDVYEDELVPVFEAVGRIYELRLMMDFDGKN
RGYAFVMYCHKHEAKRAVRELNNEYIRPGRLLGVCCSVDNCRLLFIGGIPKMKKREEI
LEEI AKVTEGVLDVIVYASAADKMKNRGFVVEYESHRAAAMARRKLM PGRIQLWG
HQI AVDWAEPEIDVDEDVMETVKILYVRNLMIETTEDTIKKSFGQFNPGCVERVKKIR
DYAFVHFTSREDAVHAMNNLNGTELEGSCLEVTLAKPVDKEQYSRYQKAARGGGA
AEAAQQPSYVYSCDPYTLAYYGYPYNALIGPNRDYFVKVAIPAIGAQYSMFPAAPAP
KMIEDGKIHTVEHMISPIAVQPDPASAAAAAAAAAAAAAAAAAVIPTVSTPPPFQGRPITPV
YTVAPNVQRIPTAGIYGASYVPFAAPATATLQKNAAAAAAAAVYGGYAGYIPQAFPA

Tel: 1-631-559-9269 1-516-512-3133

Email: info@creative-biomart.com Fax: 1-631-938-8127

45-1 Ramsey Road, Shirley, NY 11967, USA

AAIQVPIPDVYQTYTRTRPLEQKLISEEDLAANDILDYKDDDDKV

Purity > 80% as determined by SDS-PAGE and Coomassie blue staining

Stability Stable for 3 months from receipt of products under proper storage and handling conditions.

Storage Store at -80 centigrade. Avoid repeated freeze-thaw cycles.

Concentration 50 µg/mL as determined by BCA

Storage Buffer 100 mM glycine, 25 mM Tris-HCl, pH 7.3.

GENE INFORMATION

Gene Name [RBM47 RNA binding motif protein 47 \[Homo sapiens \(human\) \]](#)

Official Symbol [RBM47](#)

Synonyms [RBM47](#); [RNA binding motif protein 47](#); [NET18](#); [RNA-binding protein 47](#)

Gene ID [54502](#)

mRNA Refseq [NM_019027](#)

Protein Refseq [NP_061900](#)

MIM [619104](#)

UniProt ID [A0AV96](#)

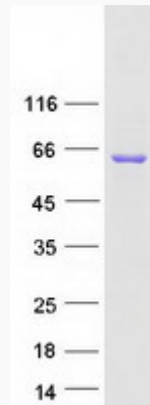
 Tel: 1-631-559-9269 1-516-512-3133

 Email: info@creative-biomart.com  Fax: 1-631-938-8127

 45-1 Ramsey Road, Shirley, NY 11967, USA



SDS-PAGE



Tel: 1-631-559-9269 1-516-512-3133

Email: info@creative-biomart.com Fax: 1-631-938-8127

45-1 Ramsey Road, Shirley, NY 11967, USA