

Active Recombinant Full Length Human RBP1 Protein, C-Flag-tagged

Cat. No. RBP1-329HFL Lot. No. (See product label)

SPECIFICATION

Product Overview	Recombinant Full Length Human RBP1 Protein, fused to Flag-tag at C-terminus, was expressed in Mammalian cells.
Species	Human
Source	Mammalian Cells
Description	This gene encodes the carrier protein involved in the transport of retinol (vitamin A alcohol) from the liver storage site to peripheral tissue. Vitamin A is a fat-soluble vitamin necessary for growth, reproduction, differentiation of epithelial tissues, and vision. Multiple transcript variants encoding different isoforms have been found for this gene.
Form	25 mM Tris HCl, pH 7.3, 100 mM glycine, 10% glycerol.
Bio-activity	Enzyme activity regulator
Molecular Mass	15.7 kDa
AA Sequence	MPVDFTGYWKMLVNENFEEYLRALDVNVALRKIANLLKPDKEIVQDGDHMIIRTLSTF RNYIMDFQVGKE FEEDLTGIDDRKCMTTVSWDGDKLQCVQKGEKEGRGWTQWIE GDELHLEMRVEGVVCKQVFKKVQTRTRPLEQKLISEEDLAANDILDYKDDDDKV
Purity	> 80% as determined by SDS-PAGE and Coomassie blue staining.

 Tel: 1-631-559-9269 1-516-512-3133

 Email: info@creative-biomart.com  Fax: 1-631-938-8127

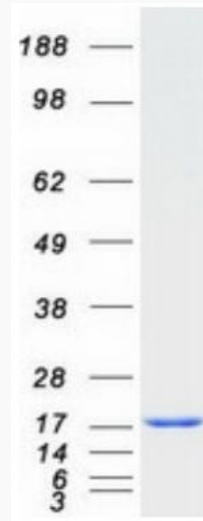
 45-1 Ramsey Road, Shirley, NY 11967, USA

Stability	Stable for 12 months from the date of receipt of the product under proper storage and handling conditions. Avoid repeated freeze-thaw cycles.
Storage	Store at -80 centigrade.
Concentration	>50 ug/mL as determined by microplate BCA method.
Preparation	Recombinant protein was captured through anti-DDK affinity column followed by conventional chromatography steps.
Full Length	Full L.
GENE INFORMATION	
Gene Name	RBP1 retinol binding protein 1 [Homo sapiens (human)]
Official Symbol	RBP1
Synonyms	CRBP; RBPC; CRBP1; CRBPI; CRABP-I
Gene ID	5947
mRNA Refseq	NM_002899.5
Protein Refseq	NP_002890.2
MIM	180260
UniProt ID	P09455

 Tel: 1-631-559-9269 1-516-512-3133

 Email: info@creative-biomart.com  Fax: 1-631-938-8127

 45-1 Ramsey Road, Shirley, NY 11967, USA



Coomassie blue staining of purified RBP1 protein.

 Tel: 1-631-559-9269 1-516-512-3133

 Email: info@creative-biomart.com  Fax: 1-631-938-8127

 45-1 Ramsey Road, Shirley, NY 11967, USA