

Recombinant Full Length Human RBPJ Protein, N-His-tagged

Cat. No. RBPJ-1960HFL Lot. No. (See product label)

SPECIFICATION

Product Overview	Recombinant Full Length Human RBPJ Protein, fused to His-tag at N-terminus, was expressed in E. coli.
Species	Human
Source	E.coli
Description	The protein encoded by this gene is a transcriptional regulator important in the Notch signaling pathway. The encoded protein acts as a repressor when not bound to Notch proteins and an activator when bound to Notch proteins. It is thought to function by recruiting chromatin remodeling complexes containing histone deacetylase or histone acetylase proteins to Notch signaling pathway genes. Several transcript variants encoding different isoforms have been found for this gene, and several pseudogenes of this gene exist on chromosome 9.
Form	25mM Tris, pH8.0, 150 mM NaCl, 10% glycerol, 1 % Sarkosyl.
Molecular Mass	55.5 kDa
AA Sequence	A DNA sequence encoding human full-length RBPJ
Purity	> 80% as determined by SDS-PAGE and Coomassie blue staining.
Stability	Stable for 12 months from the date of receipt of the product under proper storage and handling conditions. Avoid repeated freeze-thaw cycles.

 Tel: 1-631-559-9269 1-516-512-3133

 Email: info@creative-biomart.com  Fax: 1-631-938-8127

 45-1 Ramsey Road, Shirley, NY 11967, USA

Storage	Store at -80 centigrade.
Concentration	>50 ug/mL as determined by microplate BCA method.
Protein Families	Transcription Factors
Protein Pathways	Notch signaling pathway
Full Length	Full L.

GENE INFORMATION

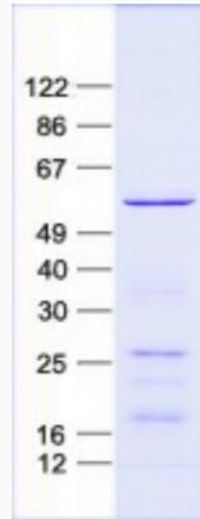
Gene Name	RBPJ recombination signal binding protein for immunoglobulin kappa J region [Homo sapiens (human)]
Official Symbol	RBPJ
Synonyms	SUH; csl; AOS3; CBF1; KBF2; CBF-1; RBP-J; RBPJK; IGKJRB; RBP-JK; RBPSUH; IGKJRB1; RBP-J kappa
Gene ID	3516
mRNA Refseq	NM_005349.4
Protein Refseq	NP_005340.2
MIM	147183
UniProt ID	Q06330

 Tel: 1-631-559-9269 1-516-512-3133

 Email: info@creative-biomart.com  Fax: 1-631-938-8127

 45-1 Ramsey Road, Shirley, NY 11967, USA

SDS-PAGE



 Tel: 1-631-559-9269 1-516-512-3133

 Email: info@creative-biomart.com  Fax: 1-631-938-8127

 45-1 Ramsey Road, Shirley, NY 11967, USA