

# Recombinant Full Length Human RBX1 Protein, C-Flag-tagged

Cat. No. RBX1-1980HFL Lot. No. (See product label)

## SPECIFICATION

<b>Product Overview</b>	Recombinant Full Length Human RBX1 Protein, fused to Flag-tag at C-terminus, was expressed in Mammalian cells.
<b>Species</b>	Human
<b>Source</b>	Mammalian Cells
<b>Description</b>	This locus encodes a RING finger-like domain-containing protein. The encoded protein interacts with cullin proteins and likely plays a role in ubiquitination processes necessary for cell cycle progression. This protein may also affect protein turnover. Related pseudogenes exist on chromosomes 2 and 5.
<b>Form</b>	25 mM Tris HCl, pH 7.3, 100 mM glycine, 10% glycerol.
<b>Molecular Mass</b>	12.1 kDa
<b>AA Sequence</b>	MAAAMDVDTPSGTNSGAGKKRFEVKKWNAVALWAWDIVVDNCAICRNHIMDLICIEC QANQASATSEECTV AWGVCNHAFHFHCISRWLKTRQVCPLDNREWEFQKYGH TR TRPLEQKLISEEDLAANDILDYKDDDDKV
<b>Purity</b>	> 80% as determined by SDS-PAGE and Coomassie blue staining.
<b>Stability</b>	Stable for 12 months from the date of receipt of the product under proper storage and handling conditions. Avoid repeated freeze-thaw cycles.

 Tel: 1-631-559-9269 1-516-512-3133

 Email: [info@creative-biomart.com](mailto:info@creative-biomart.com)  Fax: 1-631-938-8127

 45-1 Ramsey Road, Shirley, NY 11967, USA

<b>Storage</b>	Store at -80 centigrade.
<b>Concentration</b>	>50 ug/mL as determined by microplate BCA method.
<b>Preparation</b>	Recombinant protein was captured through anti-DDK affinity column followed by conventional chromatography steps.
<b>Protein Families</b>	Druggable Genome
<b>Protein Pathways</b>	Cell cycle, Nucleotide excision repair, Oocyte meiosis, Pathways in cancer, Renal cell carcinoma, TGF-beta signaling pathway, Ubiquitin mediated proteolysis, Wnt signaling pathwa
<b>Full Length</b>	Full L.

## GENE INFORMATION

<b>Gene Name</b>	RBX1 ring-box 1 [ Homo sapiens (human) ]
<b>Official Symbol</b>	RBX1
<b>Synonyms</b>	ROC1; RNF75; BA554C12.1
<b>Gene ID</b>	9978
<b>mRNA Refseq</b>	NM_014248.4
<b>Protein Refseq</b>	NP_055063.1
<b>MIM</b>	603814

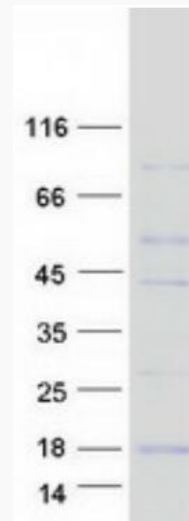
 Tel: 1-631-559-9269 1-516-512-3133

 Email: [info@creative-biomart.com](mailto:info@creative-biomart.com)  Fax: 1-631-938-8127

 45-1 Ramsey Road, Shirley, NY 11967, USA

UniProt ID

P62877



Coomassie blue staining of purified RBX1 protein.

 Tel: 1-631-559-9269 1-516-512-3133

 Email: [info@creative-biomart.com](mailto:info@creative-biomart.com)  Fax: 1-631-938-8127

 45-1 Ramsey Road, Shirley, NY 11967, USA