

# Recombinant Human RBX1 Protein, Myc/DDK-tagged, C13 and N15-labeled

**Cat. No.** RBX1-969H    **Lot. No.** (See product label)

## SPECIFICATION

<b>Product Overview</b>	RBX1 MS Standard C13 and N15-labeled recombinant protein (NP_055063) with a C-terminal MYC/DDK tag, was expressed in HEK293 cells.
<b>Species</b>	Human
<b>Source</b>	HEK293
<b>Description</b>	This locus encodes a RING finger-like domain-containing protein. The encoded protein interacts with cullin proteins and likely plays a role in ubiquitination processes necessary for cell cycle progression. This protein may also affect protein turnover. Related pseudogenes exist on chromosomes 2 and 5.
<b>Molecular Mass</b>	12.3 kDa
<b>AA Sequence</b>	MAAAMDVDTPSGTNSGAGKKRFEVKKWNAVALWAWDIVVDNCAICRNHIMDLCEC QANQASATSEECTVAWGVCNHAHFHFCISRWLKTRQVCPLDNREWEFQKYGHTRT RPLEQKLISEEDLAANDILDYKDDDDKV
<b>Purity</b>	> 80% as determined by SDS-PAGE and Coomassie blue staining
<b>Stability</b>	Stable for 3 months from receipt of products under proper storage and handling conditions.
<b>Storage</b>	Store at -80 centigrade. Avoid repeated freeze-thaw cycles.

 Tel: 1-631-559-9269    1-516-512-3133

 Email: [info@creative-biomart.com](mailto:info@creative-biomart.com)     Fax: 1-631-938-8127

 45-1 Ramsey Road, Shirley, NY 11967, USA

**Concentration** 50 µg/mL as determined by BCA

**Storage Buffer** 100 mM glycine, 25 mM Tris-HCl, pH 7.3.

## GENE INFORMATION

**Gene Name** RBX1 ring-box 1 [ Homo sapiens (human) ]

**Official Symbol** RBX1

**Synonyms** RBX1; ring-box 1, E3 ubiquitin protein ligase; ring box 1; E3 ubiquitin-protein ligase RBX1; BA554C12.1; regulator of cullins 1; RNF75; ROC1; ZYP protein; RING box protein 1; RING-box protein 1; RING finger protein 75; MGC1481; FLJ60363; MGC13357;

**Gene ID** 9978

**mRNA Refseq** NM\_014248

**Protein Refseq** NP\_055063

**MIM** 603814

**UniProt ID** P62877

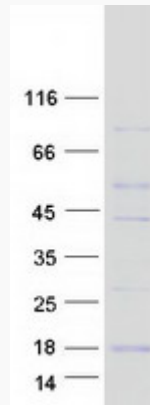
 Tel: 1-631-559-9269 1-516-512-3133

 Email: [info@creative-biomart.com](mailto:info@creative-biomart.com)  Fax: 1-631-938-8127

 45-1 Ramsey Road, Shirley, NY 11967, USA



**SDS-PAGE**



Tel: 1-631-559-9269 1-516-512-3133

Email: [info@creative-biomart.com](mailto:info@creative-biomart.com) Fax: 1-631-938-8127

45-1 Ramsey Road, Shirley, NY 11967, USA