

Recombinant Human RC3H2 Protein, GST-tagged

Cat. No. RC3H2-5443H Lot. No. (See product label)

SPECIFICATION

Product Overview	Human MNAB partial ORF (NP_055369, 748 a.a. - 847 a.a.) recombinant protein with GST-tag at N-terminal.
Species	Human
Source	Wheat Germ
Description	RC3H2 (Ring Finger And CCCH-Type Domains 2) is a Protein Coding gene. GO annotations related to this gene include poly(A) RNA binding and mRNA binding. An important paralog of this gene is RC3H1.
Molecular Mass	36.74 kDa
AA Sequence	YVNAVDSRWSSYGNEATSSAHYVERDRFIVTDLSGHRKHSSTGDLLSLELQQAKSN SLLLQREANALAMQQKWNSLDEGRHLTLNLLSKEIELRNGEVKK
Applications	Enzyme-linked Immunoabsorbent Assay Western Blot (Recombinant protein) Antibody Production Protein Array
Notes	Best use within three months from the date of receipt of this protein.
Storage	Store at -80 centigrade. Aliquot to avoid repeated freezing and thawing.

 Tel: 1-631-559-9269 1-516-512-3133

 Email: info@creative-biomart.com  Fax: 1-631-938-8127

 45-1 Ramsey Road, Shirley, NY 11967, USA

Storage Buffer 50 mM Tris-HCl, 10 mM reduced Glutathione, pH=8.0 in the elution buffer.

GENE INFORMATION

Gene Name RC3H2 ring finger and CCCH-type domains 2 [Homo sapiens]

Official Symbol RC3H2

Synonyms RC3H2; ring finger and CCCH-type domains 2; membrane associated DNA binding protein , MNAB, ring finger and CCCH type zinc finger domains 2; RING finger and CCCH-type zinc finger domain-containing protein 2; FLJ20301; FLJ20713; RNF164; RING finger protein 164; membrane associated DNA binding protein; ring finger and CCCH-type zinc finger domains 2; membrane-associated nucleic acid binding protein; membrane-associated nucleic acid-binding protein; MNAB; MGC52176;

Gene ID 54542

mRNA Refseq NM_001100588

Protein Refseq NP_001094058

UniProt ID Q9HBD1

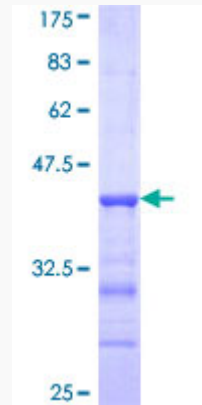
 Tel: 1-631-559-9269 1-516-512-3133

 Email: info@creative-biomart.com  Fax: 1-631-938-8127


 45-1 Ramsey Road, Shirley, NY 11967, USA

Quality Control


Testing:



12.5% SDS-PAGE Stained with Coomassie Blue.

 Tel: 1-631-559-9269 1-516-512-3133

 Email: info@creative-biomart.com  Fax: 1-631-938-8127

 45-1 Ramsey Road, Shirley, NY 11967, USA