

Recombinant Human RCC1 Protein, GST-Tagged

Cat. No. RCC1-1326H Lot. No. (See product label)

SPECIFICATION

Product Overview	Human CHC1 partial ORF (AAH07300, 312 a.a. - 421 a.a.) recombinant protein with GST-tag at N-terminal.
Species	Human
Source	Wheat Germ
Description	RCC1 (Regulator Of Chromosome Condensation 1) is a Protein Coding gene. Diseases associated with RCC1 include Renal-Hepatic-Pancreatic Dysplasia and Retinitis Pigmentosa. Among its related pathways are HIV Life Cycle and Ran Pathway. GO annotations related to this gene include chromatin binding and nucleosomal DNA binding. An important paralog of this gene is RPGR.
Molecular Mass	37.73 kDa
AA Sequence	EGKAYSLGRAEYGRLLGLGEGAEKSIPTLISRLPAVSSVACGASVGYAVTKDGRVFA WGMGTNYQLGTGQDEDAWSPVEMMGKQLENRVVLSVSSGGQHTVLLVKDKEQS
Applications	Enzyme-linked Immunoabsorbent Assay Western Blot (Recombinant protein) Antibody Production Protein Array
Storage	Store at -80 centigrade. Aliquot to avoid repeated freezing and thawing.

 Tel: 1-631-559-9269 1-516-512-3133

 Email: info@creative-biomart.com  Fax: 1-631-938-8127

 45-1 Ramsey Road, Shirley, NY 11967, USA

Storage Buffer 50 mM Tris-HCl, 10 mM reduced Glutathione, pH=8.0 in the elution buffer.

GENE INFORMATION

Gene Name [RCC1 regulator of chromosome condensation 1 \[Homo sapiens \]](#)

Official Symbol [RCC1](#)

Synonyms RCC1; regulator of chromosome condensation 1; CHC1, chromosome condensation 1; regulator of chromosome condensation; cell cycle regulatory protein; SNHG3-RCC1 readthrough transcript; guanine nucleotide-releasing protein; CHC1; RCC1-l; SNHG3-RCC1;

Gene ID [1104](#)

mRNA Refseq [NM_001048194](#)

Protein Refseq [NP_001041659](#)

MIM [179710](#)

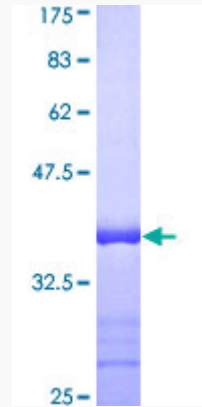
UniProt ID [P18754](#)

 Tel: 1-631-559-9269 1-516-512-3133

 Email: info@creative-biomart.com  Fax: 1-631-938-8127

 45-1 Ramsey Road, Shirley, NY 11967, USA

**Quality Control
Testing**



12.5% SDS-PAGE Stained with Coomassie Blue.

 Tel: 1-631-559-9269 1-516-512-3133

 Email: info@creative-biomart.com  Fax: 1-631-938-8127

 45-1 Ramsey Road, Shirley, NY 11967, USA