

Recombinant Human RCC1 Protein, Myc/DDK-tagged, C13 and N15-labeled

Cat. No. RCC1-1340H **Lot. No.** (See product label)

SPECIFICATION

Product Overview	RCC1 MS Standard C13 and N15-labeled recombinant protein (NP_001260) with a C-terminal MYC/DDK tag, was expressed in HEK293 cells.
Species	Human
Source	HEK293
Description	RCC1 (Regulator Of Chromosome Condensation 1) is a Protein Coding gene. Diseases associated with RCC1 include Raynaud Disease and Microcystic Meningioma. Among its related pathways are Cell cycle_Spindle assembly and chromosome separation and Transport of the SLBP independent Mature mRNA. Gene Ontology (GO) annotations related to this gene include chromatin binding and nucleosomal DNA binding. An important paralog of this gene is HERC1.
Molecular Mass	45 kDa
AA Sequence	MSPKRIAKRRSPPADAIPKSKKVKVSHRSHSTEPGLVLTGQGDVGLGLGENVME RKKPALVSIPEDVVQAEAGGMHTVCLSKSGQVYSFGCNDÉGALGRDTSVEGSEM PGKVELQEKVVSAGDSHTAALTDDGRVFLWGSFRDNGVIGLLEPMKKSMPV QVQLDVPVVKVASGNDHLVMLTADGDLYTLGCGEQQLGRVPELFANRGRQGLE RLLVPKCVMLKSRGSRGHVRFQDAFCGAYFTFAISHEGHVYGFGLSNYHQLGTPGT ESCFIPQNLTSFKNSTKSWVGFSGGQHHTVCMDSEGKAYSLGRAEYGRLLGEGA EEKSIPTLISRLPAVSSVACGASVGYAVTKDGRVFAWGMGTNYQLGTGQDEDAWS

 Tel: 1-631-559-9269 1-516-512-3133

 Email: info@creative-biomart.com  Fax: 1-631-938-8127

 45-1 Ramsey Road, Shirley, NY 11967, USA

PVEMMGKQLENRVVLSVSSGGQHTVLLVKDKEQSTRTRPLEQKLISEEDLAANDILD
YKDDDDKV

Purity > 80% as determined by SDS-PAGE and Coomassie blue staining

Stability Stable for 3 months from receipt of products under proper storage and handling conditions.

Storage Store at -80 centigrade. Avoid repeated freeze-thaw cycles.

Concentration 50 µg/mL as determined by BCA

Storage Buffer 100 mM glycine, 25 mM Tris-HCl, pH 7.3.

GENE INFORMATION

Gene Name [RCC1 regulator of chromosome condensation 1 \[Homo sapiens \(human\) \]](#)

Official Symbol [RCC1](#)

Synonyms RCC1; regulator of chromosome condensation 1; CHC1, chromosome condensation 1; regulator of chromosome condensation; cell cycle regulatory protein; SNHG3-RCC1 readthrough transcript; guanine nucleotide-releasing protein; CHC1; RCC1-I; SNHG3-RCC1;

Gene ID [1104](#)

mRNA Refseq [NM_001269](#)

Protein Refseq [NP_001260](#)

 Tel: 1-631-559-9269 1-516-512-3133

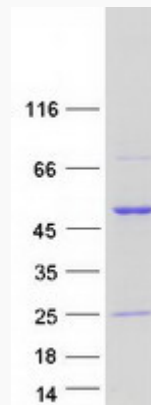
 Email: info@creative-biomart.com  Fax: 1-631-938-8127

 45-1 Ramsey Road, Shirley, NY 11967, USA

MIM 179710

UniProt ID P18754

SDS-PAGE



 Tel: 1-631-559-9269 1-516-512-3133

 Email: info@creative-biomart.com  Fax: 1-631-938-8127

 45-1 Ramsey Road, Shirley, NY 11967, USA