

Recombinant Human RCC1 protein, His-tagged

Cat. No. RCC1-2230H Lot. No. (See product label)

SPECIFICATION

Product Overview	Recombinant Human RCC1 protein(120-421 aa), fused with N-terminal His tag, was expressed in E. coli.
Species	Human
Source	E. coli
ProteinLength	120-421 aa
Form	The purified protein was lyophilized from sterile phosphate-buffered saline (PBS: 58 mM Na ₂ HPO ₄ , 17 mM NaH ₂ PO ₄ , 68 mM NaCl, pH 7.4). Prior to lyophilization, 5% (w/v) trehalose and 5% (w/v) mannitol were incorporated as cryoprotective excipients. The protein was eluted with a buffer containing 300 mM imidazole.
AASequence	KVVQVSAGDSHTAALTDDGRVFLWGSFRDNNGVIGLLEPMKKSMPVQVQLDVPV VKVASGNDHLVMLTADGDLYTLGCGEQQLGRVPELGFANRGGRRQLERLLVPKCV MLKSRGSRGHVRFQDAFCGAYFTFAISHEGHVYGFGLSNYHQLGTPGTESCFIPQN LTSFKNSTKSWVGFSGGQHHTVCMDSEGKAYSLGRAEYGRGLGEGAEKSIPTLI SRLPAVSSVACGASVGYAVTKDGRVFAWGMGTNYQLGTGQDEDAWSPVEMMGK QLENRVVLSVSSGGQHTVLLVKDKEQS
Purity	85%, by SDS-PAGE.
Storage	Store at 2-8°C for 1-2 weeks. Aliquot and store at -20°C to -80°C for up to 3 months, reconstitution with sterile water and addition of an equal volume of glycerol. Avoid

 Tel: 1-631-559-9269 1-516-512-3133

 Email: info@creative-biomart.com  Fax: 1-631-938-8127

 45-1 Ramsey Road, Shirley, NY 11967, USA

repeat freeze-thaw cycles.

Reconstitution

It is recommended that sterile water be added to the vial to prepare a stock solution of 0.25 ug/ul. Centrifuge the vial at 4°C before opening to recover the entire contents.

GENE INFORMATION

Gene Name

RCC1 regulator of chromosome condensation 1 [Homo sapiens]

Official Symbol

RCC1

Synonyms

RCC1; regulator of chromosome condensation 1; CHC1, chromosome condensation 1; regulator of chromosome condensation; cell cycle regulatory protein; SNHG3-RCC1 readthrough transcript; guanine nucleotide-releasing protein; CHC1; RCC1-I; SNHG3-RCC1;

mRNA Refseq

NM_001048194

Protein Refseq

NP_001041659

MIM

179710

UniProt ID


P18754

Gene ID

1104

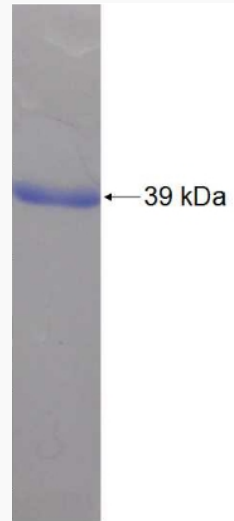
 Tel: 1-631-559-9269 1-516-512-3133

 Email: info@creative-biomart.com  Fax: 1-631-938-8127

 45-1 Ramsey Road, Shirley, NY 11967, USA



SDS-PAGE



Tel: 1-631-559-9269 1-516-512-3133

Email: info@creative-biomart.com Fax: 1-631-938-8127

45-1 Ramsey Road, Shirley, NY 11967, USA