

Recombinant Human REC8 Protein, Myc/DDK-tagged, C13 and N15-labeled

Cat. No. REC8-2887H **Lot. No.** (See product label)

SPECIFICATION

Product Overview	REC8 MS Standard C13 and N15-labeled recombinant protein (NP_005123) with a C-terminal MYC/DDK tag, was expressed in HEK293 cells.
Species	Human
Source	HEK293
Description	This gene encodes a member of the kleisin family of SMC (structural maintenance of chromosome) protein partners. The protein localizes to the axial elements of chromosomes during meiosis in both oocytes and spermatocytes. In the mouse, the homologous protein is a key component of the meiotic cohesion complex, which regulates sister chromatid cohesion and recombination between homologous chromosomes. Multiple alternatively spliced variants, encoding the same protein, have been found for this gene.
Molecular Mass	62.6 kDa
AA Sequence	MFYYPNVLQRHTGCFATIWLAATRGSRLVKREYLRVNVVKTCEEILNYVLVRVQPPQ PGLPRPRFSLYLSAQLQIGVIRVYSQQCQYLVEDIQHILERLHRAQLQIRIDMETELPS LLLPNHLAMMETLEDAPDPFFGMMSVDPRLPSPFDIPQIRHLLAAIPERVEEIPPEV PTEPREPERIPVTVLPPEAITILEAEPIRMLEIEGERELPEVSRRELDLLIAEEEEAILLEI PRLPPPAPAEVEGIGEALGPEELRLTGWEPGALLMEVTPPEELRLPAPPSPERRPPV PPPPRRRRRRLLFWDKETQISPEKFQEQLQTRAHCWECPMVQPPERTIRGPAELF

 Tel: 1-631-559-9269 1-516-512-3133

 Email: info@creative-biomart.com  Fax: 1-631-938-8127

 45-1 Ramsey Road, Shirley, NY 11967, USA

RTPTLSGWLPELLGLWTHCAQPPPKALRRELPEEAAAAEEERRKIEVPSEIEVPREA
 LEPSVPLMVSLEISLEAAAAEEKSRISLIPPEERWAWPEVEAPEAPALPVVPELPEVPM
 EMPLVLPPELELLSLEAVHRAVALELQANREPDFSSLVSPLSPRRMAARVFYLLLVLS
 AQQILHVKQEKPYGRLLIQGPRFHTRTRPLEQKLISEEDLAANDILDYKDDDDKV

Purity > 80% as determined by SDS-PAGE and Coomassie blue staining

Stability Stable for 3 months from receipt of products under proper storage and handling conditions.

Storage Store at -80 centigrade. Avoid repeated freeze-thaw cycles.

Concentration 50 µg/mL as determined by BCA

Storage Buffer 100 mM glycine, 25 mM Tris-HCl, pH 7.3.

GENE INFORMATION

Gene Name REC8 REC8 meiotic recombination protein [Homo sapiens (human)]

Official Symbol REC8

Synonyms REC8; REC8 homolog (yeast); REC8 like 1 (yeast), REC8L1; meiotic recombination protein REC8 homolog; Rec8p; REC8-like 1; cohesin Rec8p; cohesin rec8p; human homolog of rad21, S. pombe; meiotic recombination protein REC8-like 1; recombination and sister chromatid cohesion protein homolog; meiotic recombination and sister chromatid cohesion phosphoprotein of the rad21p family; REC8L1; HR21spB; MGC950;

Gene ID 9985

 Tel: 1-631-559-9269 1-516-512-3133

 Email: info@creative-biomart.com  Fax: 1-631-938-8127

 45-1 Ramsey Road, Shirley, NY 11967, USA

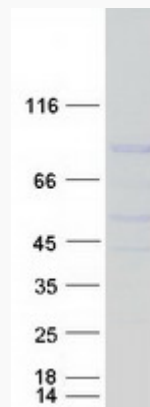
mRNA Refseq [NM_005132](#)

Protein Refseq [NP_005123](#)

MIM [608193](#)

UniProt ID [O95072](#)

SDS-PAGE



 Tel: 1-631-559-9269 1-516-512-3133

 Email: info@creative-biomart.com  Fax: 1-631-938-8127

 45-1 Ramsey Road, Shirley, NY 11967, USA