

Recombinant Human RECQL4 protein, His-tagged

Cat. No. RECQL4-2243H Lot. No. (See product label)

SPECIFICATION

Product Overview	Recombinant Human RECQL4 protein is produced by E. coli-derived, PET28a expression system. This protein is fused with a His tag.
Species	Human
Source	E.coli
ProteinLength	297-652 aa
Form	The purified protein was Lyophilized from sterile PBS (58 mM Na ₂ HPO ₄ , 17 mM NaH ₂ PO ₄ , 68 mM NaCl, pH7.0). 5 % trehalose and 5 % mannitol are added as protectants before lyophilization.
AA Sequence	CTCTCTRPPSEQEGAVGGERPVPKYPPQEAQLSHQAAPGPRRVCMGHERALPIQ LTVQALDMPPEAIETLLCYLELHPHHWLELLATTYTHCRLNCPGGPAQLQALAHRCPLAVCLAQQLPEDPGQGSSSVFEDMVKLVDSMGWELASVRRALCQLQWDHEPRT GVRRGTGVLVEFSELAFLRSPGDLTAEKDKQICDFLYGRVQARERQALARLRRTF QAFHSVAFPPSCGPCLEQQDEERSTRKDLLGRYFEEEEEGQEPGGMEDAQQPEPG QARLQDWEDQVRCDIRQFLSLRPEEKFSSRAVARIFHGIGSPCYPAQVYGGQDRRFW RKYLHLSFHALVGLATEELLQVAR
Purity	> 85%, by SDS-PAGE with Coomassie Brilliant Blue staining.
Stability	Samples are stable for up to twelve months from date of receipt at -70 centigrade.

 Tel: 1-631-559-9269 1-516-512-3133

 Email: info@creative-biomart.com  Fax: 1-631-938-8127

 45-1 Ramsey Road, Shirley, NY 11967, USA

Storage	Store it under sterile conditions at -20 centigrade to -80 centigrade. It is recommended that the protein be aliquoted for optimal storage. Avoid repeated freeze-thaw cycles.
Reconstitution	It is recommended that sterile water be added to the vial to prepare a stock solution of 0.2 ug/ul. Centrifuge the vial at 4°C before opening to recover the entire contents.
Shipping	The product is shipped at ambient temperature. Upon receipt, store it immediately at the recommended temperature.

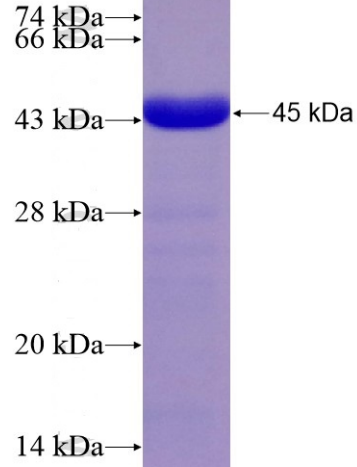
GENE INFORMATION

Gene Name	RECQL4 RecQ protein-like 4 [Homo sapiens]
Official Symbol	RECQL4
Synonyms	RECQL4; RecQ protein-like 4; ATP-dependent DNA helicase Q4; RecQ4; RECQ4;
Gene ID	9401
mRNA Refseq	NM_004260
Protein Refseq	NP_004251
MIM	603780
UniProt ID	O94761

 Tel: 1-631-559-9269 1-516-512-3133

 Email: info@creative-biomart.com  Fax: 1-631-938-8127

 45-1 Ramsey Road, Shirley, NY 11967, USA



 Tel: 1-631-559-9269 1-516-512-3133

 Email: info@creative-biomart.com  Fax: 1-631-938-8127

 45-1 Ramsey Road, Shirley, NY 11967, USA