

Recombinant Human REEP6 Protein, Myc/DDK-tagged, C13 and N15-labeled

Cat. No. REEP6-4435H Lot. No. (See product label)

SPECIFICATION

Product Overview	REEP6 MS Standard C13 and N15-labeled recombinant protein (NP_612402) with a C-terminal MYC/DDK tag, was expressed in HEK293 cells.
Species	Human
Source	HEK293
Description	The protein encoded by this gene may be involved in the transport of receptors from the endoplasmic reticulum (ER) to the cell surface. The encoded protein may also play a role in regulating ER membrane structure. This gene is required for the proper development of retinal rods and photoreceptors, with defects in this gene being associated with retinitis pigmentosa 77.
Molecular Mass	20.7 kDa
AA Sequence	MDGLRQRVEHFLEQRNLVTEVLGALEAKTGVEKRYLAAGAVTLLSLYLLFGYGASLL CNLIGFVYPAYASIKAIESPskDDDTVWLTYWVVYALFGLAEFFSDLLLSWFPFYVVG KCAFLLCMAPRPWNGALMLYQRVVRPLFLRHHGAVDRIMNDLSGRALDAAAGITR NVKPSQTPQPDKTRTRPLEQKLISEEDLAANDILDYKDDDDKV
Purity	> 80% as determined by SDS-PAGE and Coomassie blue staining
Stability	Stable for 3 months from receipt of products under proper storage and handling conditions.

 Tel: 1-631-559-9269 1-516-512-3133

 Email: info@creative-biomart.com  Fax: 1-631-938-8127

 45-1 Ramsey Road, Shirley, NY 11967, USA

Storage	Store at -80 centigrade. Avoid repeated freeze-thaw cycles.
Concentration	50 µg/mL as determined by BCA
Storage Buffer	100 mM glycine, 25 mM Tris-HCl, pH 7.3.
GENE INFORMATION	
Gene Name	REEP6 receptor accessory protein 6 [Homo sapiens (human)]
Official Symbol	REEP6
Synonyms	REEP6; receptor accessory protein 6; C19orf32, chromosome 19 open reading frame 32; receptor expression-enhancing protein 6; deleted in polyposis 1 like 1; DP1L1; FLJ25383; polyposis locus protein 1 like 1; deleted in polyposis 1-like 1; polyposis locus protein 1-like 1; receptor expression enhancing protein 6; TB2L1; C19orf32;
Gene ID	92840
mRNA Refseq	NM_138393
Protein Refseq	NP_612402
MIM	609346
UniProt ID	Q96HR9

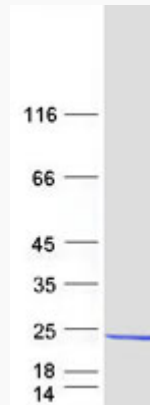
 Tel: 1-631-559-9269 1-516-512-3133

 Email: info@creative-biomart.com  Fax: 1-631-938-8127

 45-1 Ramsey Road, Shirley, NY 11967, USA



SDS-PAGE



Tel: 1-631-559-9269 1-516-512-3133

Email: info@creative-biomart.com Fax: 1-631-938-8127

45-1 Ramsey Road, Shirley, NY 11967, USA