

Recombinant Human REG1A Protein (Gln23-Asn166), C-His tagged

Cat. No. REG1A-6163H Lot. No. (See product label)

SPECIFICATION

Product Overview	Recombinant human REG1A (Gln23-Asn166) fused with the C-terminal His tag was expressed in mammalian cells.
Species	Human
Source	Mammalian Cells
ProteinLength	Gln23-Asn166
Form	Lyophilized powder/frozen liquid
Molecular Mass	15.84 kDa
Purity	> 90 % as determined by SDS-PAGE
Notes	For research use only.
Storage	Use a manual defrost freezer and avoid repeated freeze thaw cycles. Store at 2 to 8 centigrade for one week. Store at -20 to -80 centigrade for twelve months from the date of receipt.
Storage Buffer	Supplied as solution form in PBS or lyophilized from PBS.
Reconstitution	Reconstitute in sterile water for a stock solution.

 Tel: 1-631-559-9269 1-516-512-3133

 Email: info@creative-biomart.com  Fax: 1-631-938-8127

 45-1 Ramsey Road, Shirley, NY 11967, USA

Shipping They are shipped out with dry ice/blue ice unless customers require otherwise.

GENE INFORMATION

Gene Name REG1A regenerating islet-derived 1 alpha [Homo sapiens (human)]

Official Symbol REG1A

Synonyms REG1A; regenerating islet-derived 1 alpha; REG, regenerating islet derived 1 alpha (pancreatic stone protein, pancreatic thread protein); lithostathine-1-alpha; pancreatic stone protein; pancreatic thread protein; PSP; PSPS; PSPS1; PTP; protein-X; REG-1-alpha; lithostathine 1 alpha; regenerating protein I alpha; islet cells regeneration factor; pancreatic stone protein, secretory; islet of langerhans regenerating protein; regenerating islet-derived protein 1-alpha; P19; REG; ICRF; MGC12447;

Gene ID 5967

mRNA Refseq NM_002909

Protein Refseq NP_002900

MIM 167770

UniProt ID P05451

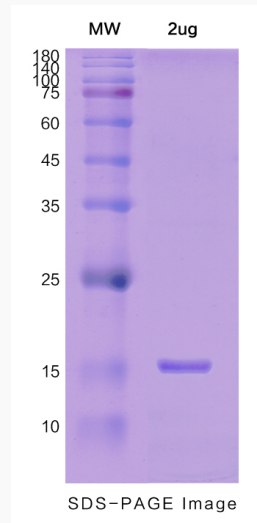
 Tel: 1-631-559-9269 1-516-512-3133

 Email: info@creative-biomart.com  Fax: 1-631-938-8127

 45-1 Ramsey Road, Shirley, NY 11967, USA



SDS-PAGE



Tel: 1-631-559-9269 1-516-512-3133

Email: info@creative-biomart.com Fax: 1-631-938-8127

45-1 Ramsey Road, Shirley, NY 11967, USA