

Recombinant Human REG1B Protein, Myc/DDK-tagged, C13 and N15-labeled

Cat. No. REG1B-4180H Lot. No. (See product label)

SPECIFICATION

Product Overview	REG1B MS Standard C13 and N15-labeled recombinant protein (NP_006498) with a C-terminal MYC/DDK tag, was expressed in HEK293 cells.
Species	Human
Source	HEK293
Description	This gene is a type I subclass member of the Reg gene family. The Reg gene family is a multigene family grouped into four subclasses, types I, II, III and IV based on the primary structures of the encoded proteins. This gene encodes a protein secreted by the exocrine pancreas that is highly similar to the REG1A protein. The related REG1A protein is associated with islet cell regeneration and diabetogenesis, and may be involved in pancreatic lithogenesis. Reg family members REG1A, REGL, PAP and this gene are tandemly clustered on chromosome 2p12 and may have arisen from the same ancestral gene by gene duplication.
Molecular Mass	18.7 kDa
AA Sequence	MAQTNSFFMLISSLMFLSLSQGGESQTELPNPRISCPEGTNAYRSYCYFNEPET WVDADLYCQNMNSGNLVSVLTAEGAFVASLIKESSTDDSNVWIGLHDPKKNRRW HWSSGSLVSYKSWDTGSPSSANAGYCASLTSCSGFKKWKDESCEKKFSFVCKFKN TRTRPLEQKLISEEDLAANDILDYKDDDDKV
Purity	> 80% as determined by SDS-PAGE and Coomassie blue staining

 Tel: 1-631-559-9269 1-516-512-3133

 Email: info@creative-biomart.com  Fax: 1-631-938-8127

 45-1 Ramsey Road, Shirley, NY 11967, USA

Stability	Stable for 3 months from receipt of products under proper storage and handling conditions.
Storage	Store at -80 centigrade. Avoid repeated freeze-thaw cycles.
Concentration	50 µg/mL as determined by BCA
Storage Buffer	100 mM glycine, 25 mM Tris-HCl, pH 7.3.
GENE INFORMATION	
Gene Name	REG1B regenerating islet-derived 1 beta [Homo sapiens (human)]
Official Symbol	REG1B
Synonyms	REG1B; regenerating islet-derived 1 beta; regenerating islet derived 1 beta (pancreatic stone protein, pancreatic thread protein); lithostathine-1-beta; lithostathine 1 beta; PSPS2; REGH; REGI BETA; REGL; secretory pancreatic stone protein 2; PSP-2; REG-1-beta; pancreatic stone protein 2; regenerating protein I beta; regenerating islet-derived protein 1-beta; regenerating islet-derived 1 beta (pancreatic stone protein, pancreatic thread protein); REGI-BETA;
Gene ID	5968
mRNA Refseq	NM_006507
Protein Refseq	NP_006498
MIM	167771
UniProt ID	P48304

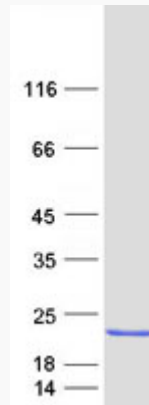
 Tel: 1-631-559-9269 1-516-512-3133

 Email: info@creative-biomart.com  Fax: 1-631-938-8127

 45-1 Ramsey Road, Shirley, NY 11967, USA



SDS-PAGE



Tel: 1-631-559-9269 1-516-512-3133

Email: info@creative-biomart.com Fax: 1-631-938-8127

45-1 Ramsey Road, Shirley, NY 11967, USA