

Recombinant Human REG1B Protein (Gln23-Asn166), N-His tagged

Cat. No. REG1B-6164H Lot. No. (See product label)

SPECIFICATION

Product Overview	Recombinant human REG1B (Gln23-Asn166) fused with the N-His tag was expressed in E. coli.
Species	Human
Source	E.coli
ProteinLength	Gln23-Asn166
Form	Lyophilized powder/frozen liquid
Molecular Mass	18.54 kDa
Purity	> 90 % as determined by SDS-PAGE
Notes	For research use only.
Storage	Use a manual defrost freezer and avoid repeated freeze thaw cycles. Store at 2 to 8 centigrade for one week. Store at -20 to -80 centigrade for twelve months from the date of receipt.
Storage Buffer	0.01M PBS, pH 7.4, 0.02 % NLS
Reconstitution	Reconstitute in sterile water for a stock solution.

 Tel: 1-631-559-9269 1-516-512-3133

 Email: info@creative-biomart.com  Fax: 1-631-938-8127

 45-1 Ramsey Road, Shirley, NY 11967, USA

Shipping They are shipped out with dry ice/blue ice unless customers require otherwise.

GENE INFORMATION

Gene Name REG1B regenerating islet-derived 1 beta [Homo sapiens (human)]

Official Symbol REG1B

Synonyms REG1B; regenerating islet-derived 1 beta; regenerating islet derived 1 beta (pancreatic stone protein, pancreatic thread protein); lithostathine-1-beta; lithostathine 1 beta; PSPS2; REGH; REGI BETA; REGL; secretory pancreatic stone protein 2; PSP-2; REG-1-beta; pancreatic stone protein 2; regenerating protein I beta; regenerating islet-derived protein 1-beta; regenerating islet-derived 1 beta (pancreatic stone protein, pancreatic thread protein); REGI-BETA;

Gene ID 5968

mRNA Refseq NM_006507

Protein Refseq NP_006498

MIM 167771

UniProt ID P48304

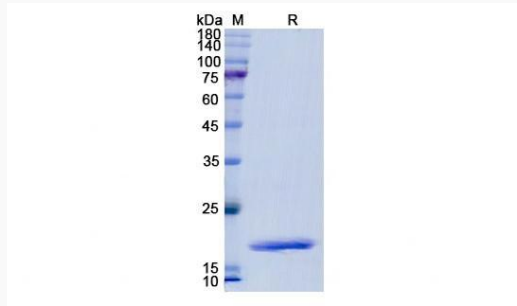
 Tel: 1-631-559-9269 1-516-512-3133

 Email: info@creative-biomart.com  Fax: 1-631-938-8127

 45-1 Ramsey Road, Shirley, NY 11967, USA



SDS-PAGE



Tel: 1-631-559-9269 1-516-512-3133

Email: info@creative-biomart.com Fax: 1-631-938-8127

45-1 Ramsey Road, Shirley, NY 11967, USA