

Recombinant Full Length Human REG3A Protein, C-Flag-tagged

Cat. No. REG3A-1340HFL **Lot. No.** (See product label)

SPECIFICATION

Product Overview	Recombinant Full Length Human REG3A Protein, fused to Flag-tag at C-terminus, was expressed in Mammalian cells.
Species	Human
Source	Mammalian Cells
Description	This gene encodes a pancreatic secretory protein that may be involved in cell proliferation or differentiation. It has similarity to the C-type lectin superfamily. The enhanced expression of this gene is observed during pancreatic inflammation and liver carcinogenesis. The mature protein also functions as an antimicrobial protein with antibacterial activity. Alternate splicing results in multiple transcript variants that encode the same protein.
Form	25 mM Tris HCl, pH 7.3, 100 mM glycine, 10% glycerol.
Molecular Mass	16.5 kDa
AA Sequence	MLPPMALPSVSWMLLSCLMLLSQVQGEEPQRELPSARIRCPKGSKAYGSHCYALFL SPKSWTDADLACQK RPSGNLVSVLGAEGSFVSSLVKSIGNSYSYVWIGLHDPTQG TEPNGEGWEWSSSDVMNYFAWERNPSTI SSPGHCASLSRSTAFRLRWKDYNCNVRLPYVCKFTD
Purity	> 80% as determined by SDS-PAGE and Coomassie blue staining.

 Tel: 1-631-559-9269 1-516-512-3133

 Email: info@creative-biomart.com  Fax: 1-631-938-8127

 45-1 Ramsey Road, Shirley, NY 11967, USA



Stability	Stable for 12 months from the date of receipt of the product under proper storage and handling conditions. Avoid repeated freeze-thaw cycles.
Storage	Store at -80 centigrade.
Concentration	>50 ug/mL as determined by microplate BCA method.
Preparation	Recombinant protein was captured through anti-DDK affinity column followed by conventional chromatography steps.
Protein Families	Druggable Genome, Secreted Protein
Full Length	Full L.

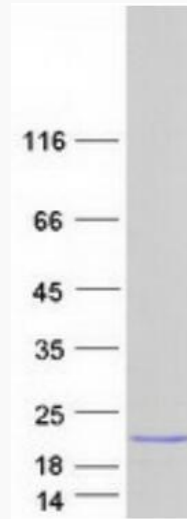
GENE INFORMATION

Gene Name	REG3A regenerating family member 3 alpha [Homo sapiens (human)]
Official Symbol	REG3A
Synonyms	HIP; PAP; PAP1; REG3; INGAP; PAP-H; PBCGF; HIP/PAP; REG-III
Gene ID	5068
mRNA Refseq	NM_138938.3
Protein Refseq	NP_620355.1
MIM	167805
UniProt ID	Q06141

Tel: 1-631-559-9269 1-516-512-3133

Email: info@creative-biomart.com Fax: 1-631-938-8127

45-1 Ramsey Road, Shirley, NY 11967, USA



Coomassie blue staining of purified REG3A protein.

 Tel: 1-631-559-9269 1-516-512-3133

 Email: info@creative-biomart.com  Fax: 1-631-938-8127

 45-1 Ramsey Road, Shirley, NY 11967, USA