

Recombinant Full Length Human REG3A Protein, C-Flag-tagged

Cat. No. REG3A-162HFL Lot. No. (See product label)

SPECIFICATION

Product Overview

Recombinant Full Length Human REG3A Protein, fused to Flag-tag at C-terminus, was expressed in Mammalian cells.

Species

Human

Source

Mammalian Cells

Description

This gene encodes a pancreatic secretory protein that may be involved in cell proliferation or differentiation. It has similarity to the C-type lectin superfamily. The enhanced expression of this gene is observed during pancreatic inflammation and liver carcinogenesis. The mature protein also functions as an antimicrobial protein with antibacterial activity. Alternate splicing results in multiple transcript variants that encode the same protein.

Form

25 mM Tris HCl, pH 7.3, 100 mM glycine, 10% glycerol.

Molecular Mass


16.5 kDa

AA Sequence

MLPPMALPSVSWMLLSCLMLLSQVQGEEPQRELPSARIRCPKGSKAYGSHCYALFL
SPKSWTDADLACQK RPSGNLVSVLGAEGSFVSSLVKSIGNSYSYVWIGLHDPTQG
TEPNGEGWEWSSSDVMNYFAWERNPSTI
SSPGHCASLSRSTAFRLRWKDYNCNVRLPYVCKFTDTRTRPLEQKLISEEDLAANDIL
DYKDDDDKV

 Tel: 1-631-559-9269 1-516-512-3133

 Email: info@creative-biomart.com  Fax: 1-631-938-8127

 45-1 Ramsey Road, Shirley, NY 11967, USA

Purity	> 80% as determined by SDS-PAGE and Coomassie blue staining.
Stability	Stable for 12 months from the date of receipt of the product under proper storage and handling conditions. Avoid repeated freeze-thaw cycles.
Storage	Store at -80 centigrade.
Concentration	>50 ug/mL as determined by microplate BCA method.
Preparation	Recombinant protein was captured through anti-DDK affinity column followed by conventional chromatography steps.
Protein Families	Druggable Genome, Secreted Protein
Full Length	Full L.

GENE INFORMATION

Gene Name	REG3A regenerating family member 3 alpha [Homo sapiens (human)]
Official Symbol	REG3A
Synonyms	HIP; PAP; PAP1; REG3; INGAP; PAP-H; PBCGF; HIP/PAP; REG-III
Gene ID	5068
mRNA Refseq	NM_002580.3
Protein Refseq	NP_002571.1
MIM	167805

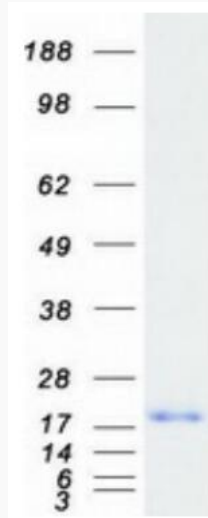
 Tel: 1-631-559-9269 1-516-512-3133

 Email: info@creative-biomart.com  Fax: 1-631-938-8127

 45-1 Ramsey Road, Shirley, NY 11967, USA

UniProt ID

Q06141



Coomassie blue staining of purified REG3A protein.

 Tel: 1-631-559-9269 1-516-512-3133

 Email: info@creative-biomart.com  Fax: 1-631-938-8127

 45-1 Ramsey Road, Shirley, NY 11967, USA