

Recombinant Human REG3A Protein, MYC/DDK-tagged, C13 and N15-labeled

Cat. No. REG3A-431H **Lot. No.** (See product label)

SPECIFICATION

Product Overview	REG3A MS Standard C13 and N15-labeled recombinant protein (NP_002571) with a C-terminal MYC/DDK tag, was expressed in HEK293 cells.
Species	Human
Source	HEK293
Description	This gene encodes a pancreatic secretory protein that may be involved in cell proliferation or differentiation. It has similarity to the C-type lectin superfamily. The enhanced expression of this gene is observed during pancreatic inflammation and liver carcinogenesis. The mature protein also functions as an antimicrobial protein with antibacterial activity. Alternate splicing results in multiple transcript variants that encode the same protein. [provided by RefSeq, Nov 2014]
Molecular Mass	19.4 kDa
AA Sequence	MLPPMALPSVSWMLLSCLMLLSQVQGEEPQRELPSARIRCPKGSKAYGSHCYALFL SPKSWTDADLACQKRPSGNLVSVLGAEGSFVSSLVKSIGNSYSYVWIGLHDPTQG TEPNGEGWEWSSSDVMNYFAWERNPSTISSPGHCASLSRSTAFLRWKDYNCNVR LPYVCKFTDTRTRPLEQKLISEEDLAANDILDYKDDDDKV
Purity	> 80% as determined by SDS-PAGE and Coomassie blue staining
Stability	Stable for 3 months from receipt of products under proper storage and handling

 Tel: 1-631-559-9269 1-516-512-3133

 Email: info@creative-biomart.com  Fax: 1-631-938-8127

 45-1 Ramsey Road, Shirley, NY 11967, USA

conditions.

Storage Store at -80 centigrade. Avoid repeated freeze-thaw cycles.

Concentration 50 µg/mL as determined by BCA

Storage Buffer 100 mM glycine, 25 mM Tris-HCl, pH 7.3.

GENE INFORMATION

Gene Name REG3A regenerating islet-derived 3 alpha [Homo sapiens (human)]

Official Symbol REG3A

Synonyms

REG3A; regenerating islet-derived 3 alpha; pancreatitis associated protein, PAP; regenerating islet-derived protein 3-alpha; HIP; PAP1; PBCGF; REG III; REG3; REG-3-alpha; reg III-alpha; PAP homologous protein; human proislet peptide; pancreatitis-associated protein 1; proliferation-inducing protein 34; proliferation-inducing protein 42; hepatocarcinoma-intestine-pancreas; pancreatic beta cell growth factor; regenerating islet-derived protein III-alpha; PAP; PAP-H; REG-III; FLJ18565;

Gene ID 5068

mRNA Refseq NM_002580

Protein Refseq NP_002571

MIM 167805

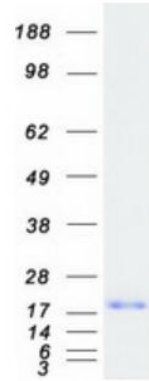
UniProt ID Q06141

 Tel: 1-631-559-9269 1-516-512-3133

 Email: info@creative-biomart.com  Fax: 1-631-938-8127

 45-1 Ramsey Road, Shirley, NY 11967, USA

SDS-PAGE



 Tel: 1-631-559-9269 1-516-512-3133

 Email: info@creative-biomart.com  Fax: 1-631-938-8127

 45-1 Ramsey Road, Shirley, NY 11967, USA